

MUNCIE, INDIANA

AL-5011 (FAA)

20170

|  |                        |   |
|--|------------------------|---|
| WAAS<br>CH <b>56401</b><br><b>W14A</b> | APP CRS<br><b>139°</b> | Rwy Idg <b>6500</b><br>TDZE <b>933</b><br>Apt Elev <b>937</b> |
|--|------------------------|---|

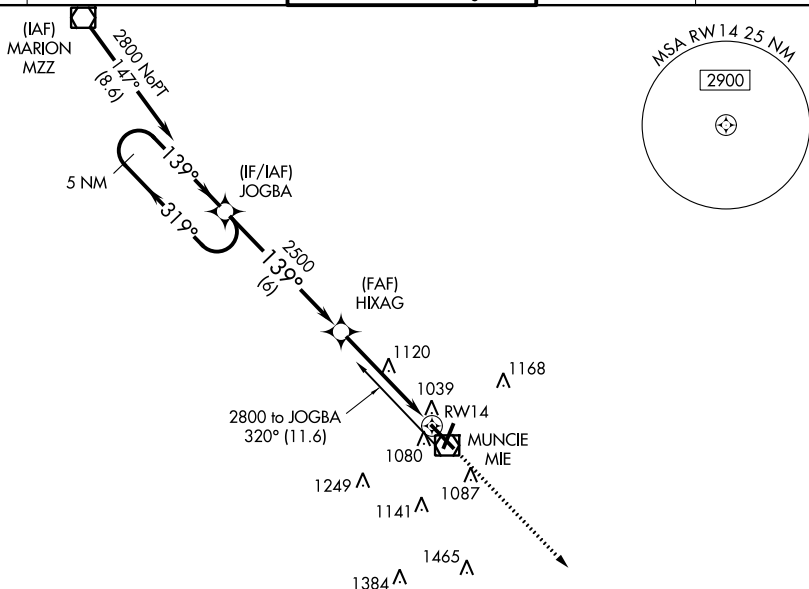
RNAV (GPS) RWY 14  
DELAWARE COUNTY RGNL (MIE)

RNP APCH.

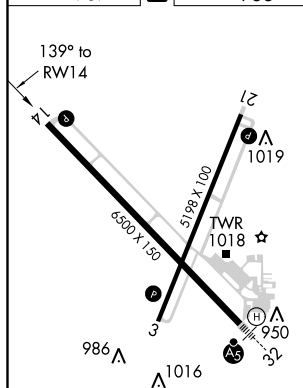
**T** For uncompensated Baro-VNAV systems, LNAV/VNAV NA below -16°C (4°F) or above 47°C (116°F).  
**A** Baro-VNAV and VDP NA when using Fort Wayne Int'l altimeter setting. When local altimeter setting not received, use Fort Wayne Int'l altimeter setting and increase LPV DA all Cats to 1375 and visibility  $\frac{1}{2}$  SM, LNAV/VNAV DA all Cats to 1410 and visibility  $\frac{1}{2}$  SM; increase all MDA 140 feet and LNAV Cat C  $\frac{1}{2}$  SM and Cat D  $\frac{1}{2}$  SM. Circling visibility Cat C/D  $\frac{1}{2}$  SM.

**MISSED APPROACH:**  
Climb to 2900 direct  
CITUK and hold.

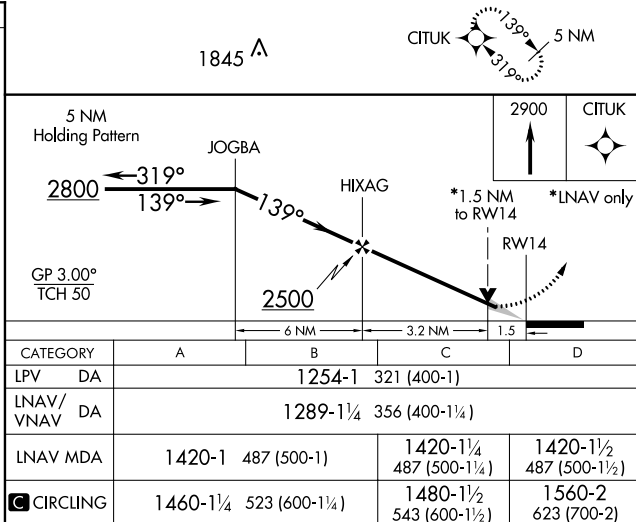
|                |                                      |                                  |                  |                  |
|----------------|--------------------------------------|----------------------------------|------------------|------------------|
| ATIS<br>133.25 | INDIANAPOLIS APP CON<br>120.65 317.8 | MUNCIE TOWER ★<br>120.1 (CTAF) 0 | GND CON<br>121.9 | UNICOM<br>122.95 |
|----------------|--------------------------------------|----------------------------------|------------------|------------------|



|          |          |          |
|----------|----------|----------|
| ELEV 937 | <b>D</b> | TDZE 933 |
|----------|----------|----------|



HIRL Rwy 14-32 (L)  
MIRL Rwy 3-21 (L)  
REIL Rwy 3, 14 and 21 (L)



MUNCIE, INDIANA  
Orig-C 18JUN20

40°15'N-85°24'W

DELAWARE COUNTY RGNL (MIE)  
RNAV (GPS) RWY 14

EC-2, 03 DEC 2020 to 31 DEC 2020

EC-2, 03 DEC 2020 to 31 DEC 2020