

LOC I-JNK <b>109.1</b>	APP CRS <b>319°</b>	Rwy Idg <b>6500</b> TDZE <b>937</b> Apt Elev <b>937</b>
---------------------------	------------------------	---

ILS or LOC RWY 32  
DELAWARE COUNTY RGNL (MIE)

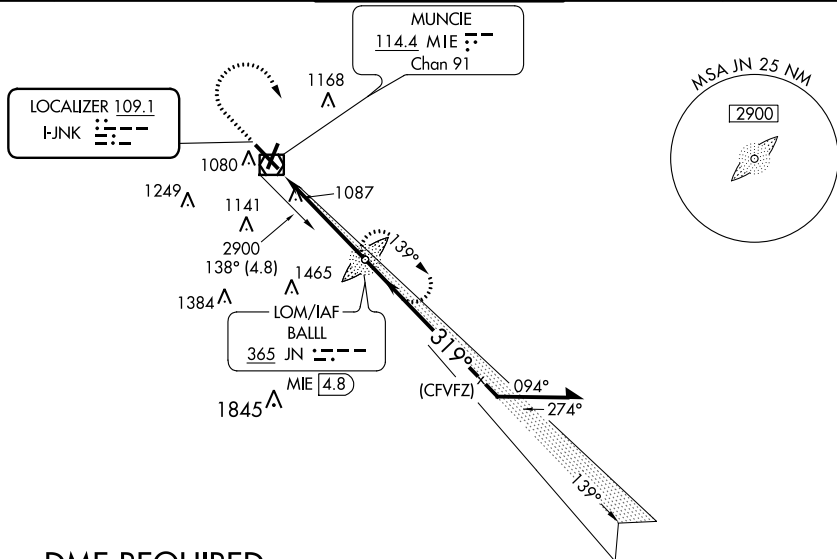
**▼** When control tower closed, except for operations with approved weather reporting use Fort Wayne altimeter setting. For info MALSR when using Fort Wayne altimeter setting minimums, increase S-ILS 32 visibility to 1 SM. When local altimeter setting not received, use Fort Wayne altimeter setting: increase DA to 1257 feet and visibility all Cats ½ SM; increase all MDAs 120 feet and visibility Cat C ¾ SM, Cat D 1 ½ SM. VDP NA when using Fort Wayne altimeter setting.

MALSR



**MISSED APPROACH:** Climb to 1460 then climbing right turn to 2900 direct **BALL LOM** and hold.

ATIS <b>133.25</b>	INDIANAPOLIS APP CON <b>120.65 317.8</b>	MUNCIE TOWER ★ <b>120.1 (CTAF) 0</b>	GND CON <b>121.9</b>	UNICOM <b>122.95</b>
-----------------------	---	---	-------------------------	-------------------------



## ADF or DME REQUIRED

ELEV 937 D TDZE 937

HIRL Rwy 14-32 1  
 MIRL Rwy 3-21 1  
 REIL Rwys 3, 14 and 21 1

FAF to MAP 4.6 NM

Knots	60	90	120	150	180
Min:Sec	4:36	3:04	2:18	1:50	1:32

**\*LOC only.**

**\*MIE 1.4**

**JN LOM MIE 4.8**

**2462**

**139°**

**319°**

**2500**

**GS 3.00° TCH 52**

CATEGORY	A	B	C	D
S-ILS 32	1137- $\frac{1}{2}$		200 (200- $\frac{1}{2}$ )	
S-LOC 32	1380- $\frac{1}{2}$	443 (500- $\frac{1}{2}$ )	1380- $\frac{7}{8}$	443 (500- $\frac{7}{8}$ )
<b>CIRCLING</b>	1460-1	523 (600-1)	1500-1 $\frac{1}{2}$ 563 (600-1 $\frac{1}{2}$ )	1600-2 663 (700-2)

**FORT WAYNE ALTIMETER SETTING MINIMUMS**

S-ILS 32	1257- $\frac{5}{8}$		320 (400- $\frac{5}{8}$ )	
S-LOC 32	1520- $\frac{1}{2}$	583 (600- $\frac{1}{2}$ )	1520-1 $\frac{1}{2}$ 583 (600-1 $\frac{1}{2}$ )	1520-2 $\frac{1}{2}$ 583 (600-2 $\frac{1}{2}$ )
<b>CIRCLING</b>	1580-1	643 (700-1)	1600-1 $\frac{3}{4}$ 663 (700-1 $\frac{3}{4}$ )	1720-2 $\frac{1}{2}$ 783 (800-2 $\frac{1}{2}$ )