

WAAS CH <b>97615</b> <b>W24A</b>	APP CRS <b>238°</b>	Rwy Idg TDZE Apt Elev	<b>9009</b> <b>1048</b> <b>1051</b>
--	------------------------	-----------------------------	---

RNAV (GPS) RWY 24

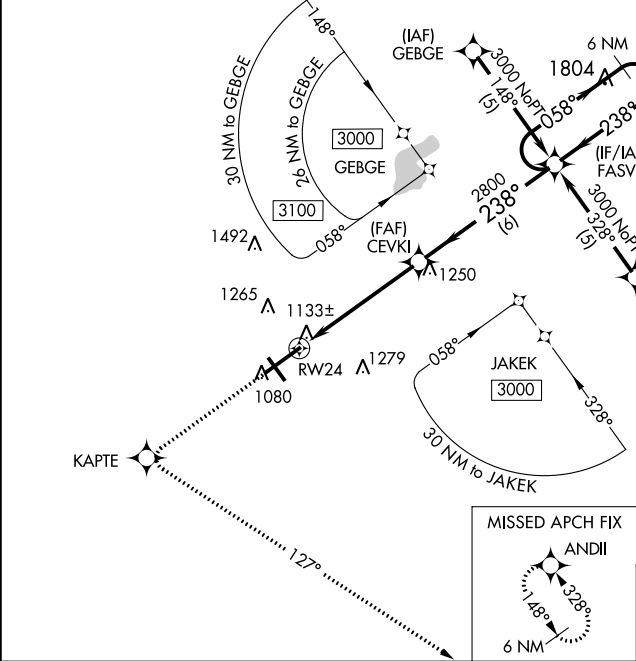
SPRINGFIELD-BECKLEY MUNI (SGH)

▼ For uncompensated Baro-VNAV systems, LNAV/VNAV NA below -17°C (2°F) or above 47°C (116°F). DME/DME RNP-0.3 NA. When local altimeter setting not received, use Wright-Patterson AFB altimeter setting and increase all DA 55 feet and all MDA 60 feet, LNAV/VNAV all Cats and LNAV Cat C visibilities ¼ mile. For inoperative ALSF-2/SSALR, increase LNAV Cat D visibility to 1¼ mile. For inoperative ALSF-2/SSALR, when using Wright-Patterson AFB altimeter setting, increase LPV all Cats visibility to 1 mile and LNAV Cat D visibility to 1¼ mile. ALSF-2 reverts to SSALR when tower is closed. VDP and Baro-VNAV NA when using Wright-Patterson AFB altimeter setting.

SSALR

MISSED APPROACH:  
Climb to 3000 direct  
KAPTE and left turn  
via track 127° to  
ANDII and hold.

AWOS-3PT <b>134.975</b>	COLUMBUS APP CON <b>118.85 269.275</b>	UNICOM <b>122.95 (CTAF) 0</b>
----------------------------	---	----------------------------------



ELEV 1051	<b>D</b> TDZE 1048
-----------	--------------------

3000

KAPTE

ANDII

↑

tr 127°

\*LNAV only

RW24

1 NM

4.3 NM

6 NM

CEVKI

238°

2800

FASVU

058°

3000

GP 3.00°

TCH 54

CATEGORY	A	B	C	D
LPV DA	1248-½ 200 (200-½)			
LNAV/VNAV DA	1398-¾ 350 (400-¾)			
LNAV MDA	1400-½ 352 (400-½)			1400-1 352 (400-1)
CIRCLING	1480-1 429 (500-1)	1520-1 469 (500-1)	1520-1½ 469 (500-1½)	1620-2 569 (600-2)

