

VOR RWY 14
MANSFIELD LAHM RGNL (MFD)

MISSED APPROACH: Climb to 1700 then climbing left turn to 3000 on MFD VORTAC R-101 to READS/MFD 20.7 DME and hold.

IAF
MANSFIELD
108.8 MFD Chan 25

085°
265°

130°

1389 ± Δ

Δ 1449

Δ 1647

Δ 1799 ±

Δ 1853

Δ 1949

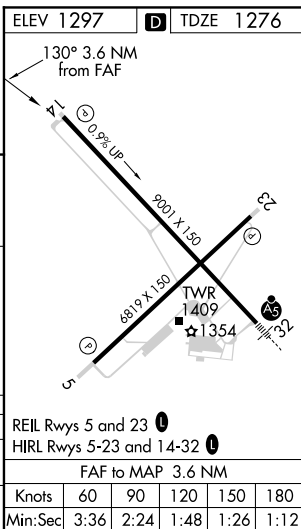
R-310

R-101

281°
101°

READS
MFD 20.7

MSA MFD 25 NM
3000



DEC-2, 03 DEC 2020 to 31 DEC 2020