

APP CRS
279°

Rwy Idg
TDZE
Apt Elev

3148
626
626

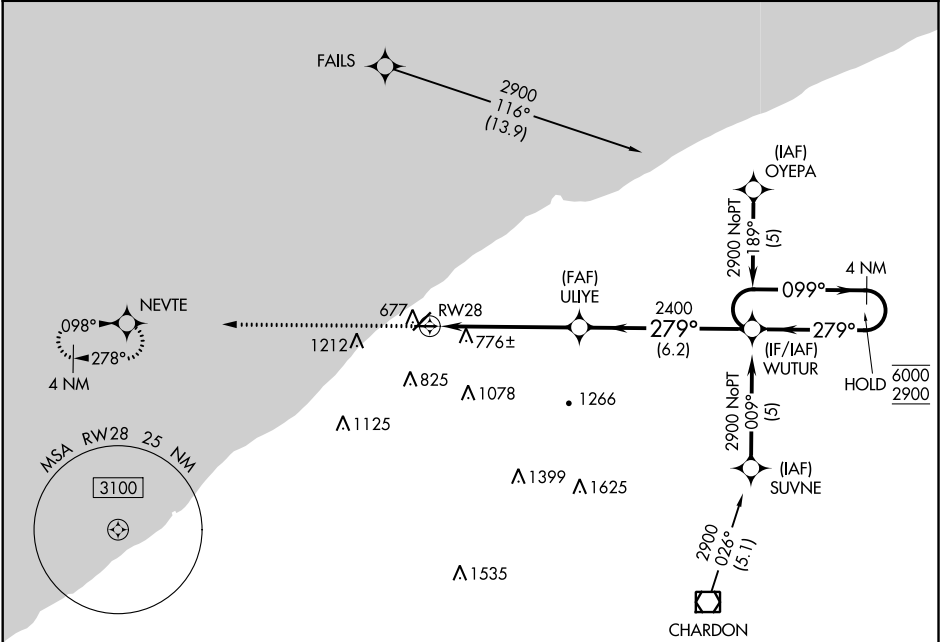
RNAV (GPS) RWY 28
LAKE COUNTY EXECUTIVE (LNN)

RNP APCH.

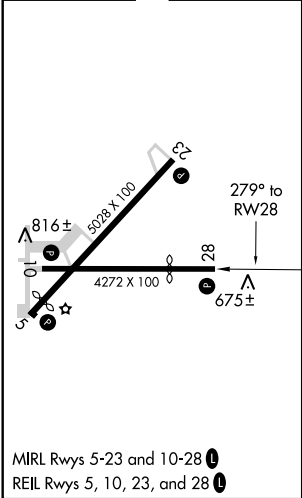
Rwy 28 helicopter visibility reduction below ¾ SM NA.

MISSED APPROACH: Climb to 2300 direct NEVTE and hold.

AWOS-3PT 119.225	CLEVELAND APP CON 125.35 346.325	UNICOM 122.725 (CTAF) 0
----------------------------	--	-----------------------------------



ELEV 626	TDZE 626
----------	----------



2300	NEVTE	VGSI and descent angles not coincident (VGSI Angle 3.50/TCH 26).			
		WUTUR	4 NM	Holding Pattern	
		ULIYE	2400	279°	099°
		1.6 NM to RWY 28	3.04° TCH 40	279°	6000/2900
		1.6 NM	3.8 NM	6.2 NM	
CATEGORY	A	B	C	D	
LNAV MDA	1260-1	634 (700-1)	1260-1¾ 634 (700-1¾)	NA	
CIRCLING	1260-1	634 (700-1)	1260-1¾ 634 (700-1¾)	NA	