

WAAS  
CH **82410**  
**W23A**

APP CRS  
**233°**

Rwy Idg  
5028

TDZE  
623

Apt Elev  
626

**RNAV (GPS) RWY 23**

LAKE COUNTY EXECUTIVE (LNN)

RNP APCH.

▼

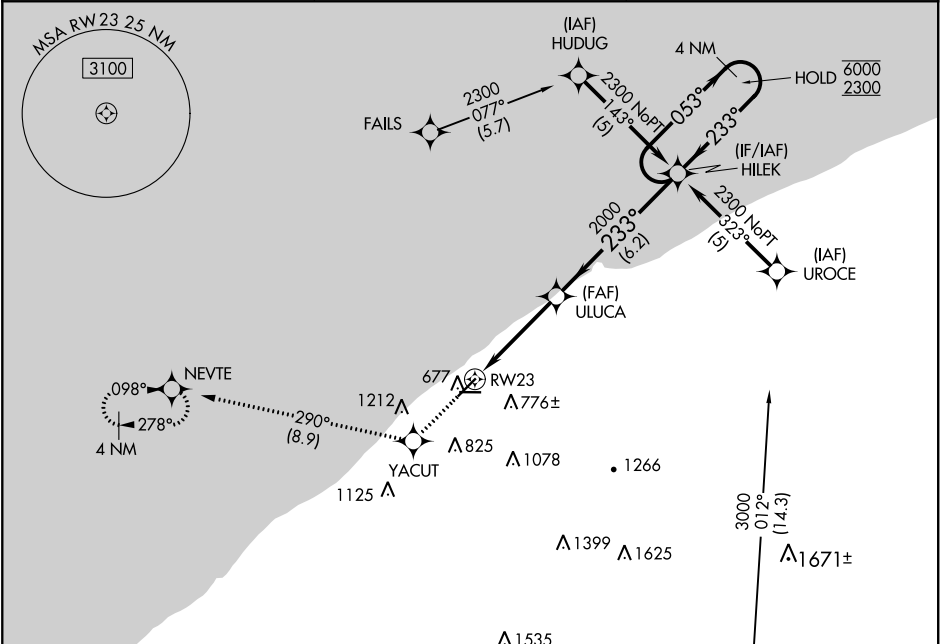
Rwy 23 helicopter visibility reduction below ¾ SM NA. For uncompensated Baro-VNAV systems, LNAV/VNAV NA below -16°C or above 54°C.

MISSED APPROACH: Climb to 2300 direct YACUT and on track 290° to NEVTE and hold.

AWOS-3PT  
119.225

CLEVELAND APP CON  
125.35 346.325

UNICOM  
122.725 (CTAF) 0



ELEV 626

TDZE 623

233° to RWY 23

5028 X 100

4272 X 100

816±

28

675±

2300

YACUT

tr 290°

NEVTE

VGSI and RNAV glidepath not coincident (VGSI Angle 4.00/TCH 54).

ULUCA

HILEK

4 NM Holding Pattern

053°

6000

2300

233°

2000

2000

GP 3.00°

TCH 40

\*LNAV only.

\*1.2 NM to RWY 23

1.2 NM

3 NM

6.2 NM

CATEGORY	A	B	C	D
LPV DA	1031-1½	408 (500-1½)		NA
LNAV/VNAV DA	1142-1¾	519 (600-1¾)		NA
LNAV MDA	1200-1	577 (600-1)	1200-1½ 577 (600-1½)	NA
CIRCLING	1200-1	574 (600-1)	1200-1½ 574 (600-1½)	NA

REIL Rwy 5, 10, 23 and 28 0

MIRL Rwy 5-23 and 10-28 0