

NDB LQL
263

APP CR: 099°

Rwy Idg	4272
TDZE	625
Apt Elev	626

NDB RWY 10
LAKE COUNTY EXECUTIVE (LNN)

RADAR required for procedure entry.

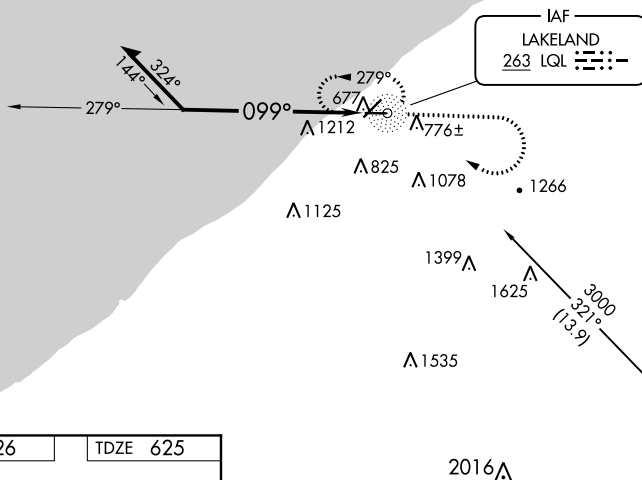
T
A NA Rwy 10 helicopter visibility reduction below $\frac{3}{4}$ SM NA.


MISSED APPROACH: Climb to 3000 then right turn direct LQL NDB and hold.

AWOS-3PT
119.225

CLEVELAND APP CON
125.35 346.325

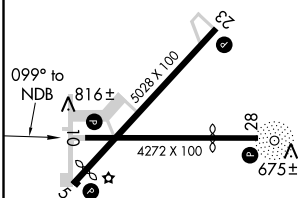
UNICOM
122.725 (CTAF) **L**




CHARDON
112.7 CXR 
Chan 74

ELEV 626

TDZE 625

REIL Rwy 5, 10, 23 and 28 **L**

MIRL Rwy 5-23 and 10-28 L

3000 ↑		LQL 
-----------	---	--

CATEGORY	A	B	C	D
S-10	1700-1¼ 1075 (1100-1¼)	1700-1½ 1075 (1100-1½)	1700-3 1075 (1100-3)	NA
CIRCLING	1700-1¼ 1074 (1100-1¼)	1700-1½ 1074 (1100-1½)	1700-3 1074 (1100-3)	NA