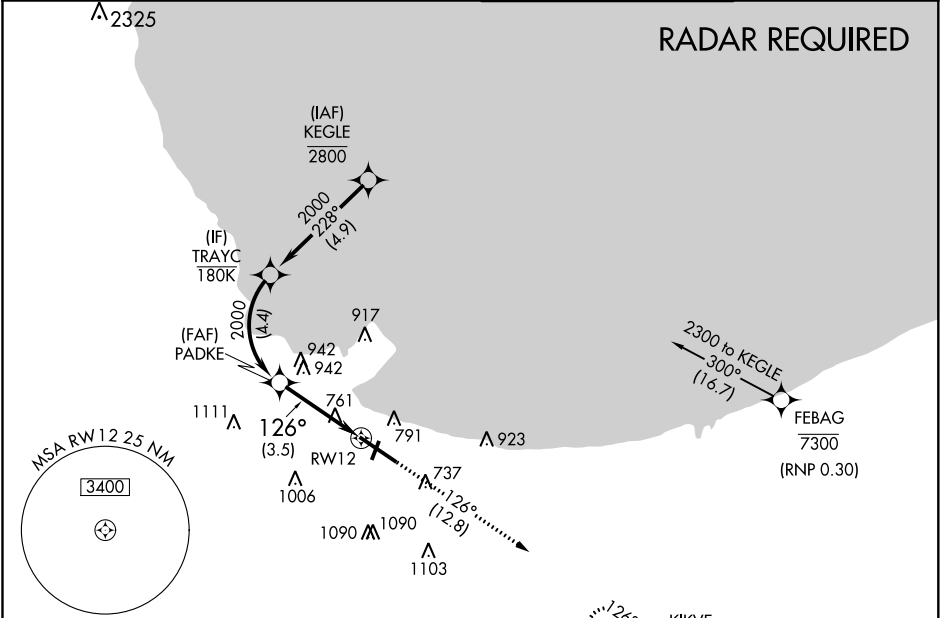


APP CRS	Rwy Idg	7959
126°	TDZE	597
	Apt Elev	597

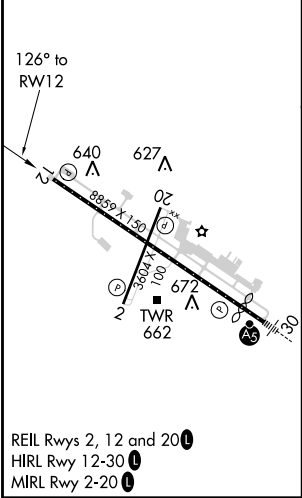
RNAV (RNP) Z RWY 12
GARY/CHICAGO INTL (GYY)

<p>For uncompensated Baro-VNAV systems, procedure NA below -16°C (4°F) or above 45°C (113°F). RF and GPS required. Procedure NA for wingspans greater than 136 feet.</p>	<p>MISSED APPROACH: Climb to 2400 on track 126° to KIKVE and hold.</p>
--	--

ATIS 134.575	CHICAGO APP CON 133.1 285.6	GARY TOWER ★ 125.6 (CTAF) 0	GND CON 121.9
-----------------	--------------------------------	--------------------------------	------------------



ELEV 597	D	TDZE 597
----------	---	----------



	TRAYC	PADKE		2400	KIKVE
		2000		↑	★
		2000		tr 126°	
	2000	126°	2000	126°	RWY 12
	GP 3.60°				
	TCH 60				
	4.4 NM	3.5 NM			
CATEGORY	A	B	C	D	
RNP 0.13 DA	978-1 1/8	381 (400-1 1/8)		NA	
RNP 0.30 DA	1056-1 3/8	459 (500-1 3/8)		NA	
AUTHORIZATION REQUIRED					