

WAAS CH 45907 W18A	APP CRS 183°	Rwy Idg TDZE 663 Apt Elev 663	5001 663 663
--	------------------------	---	---

RNAV (GPS) RWY 18

GREATER PORTSMOUTH RGNL (PMH)

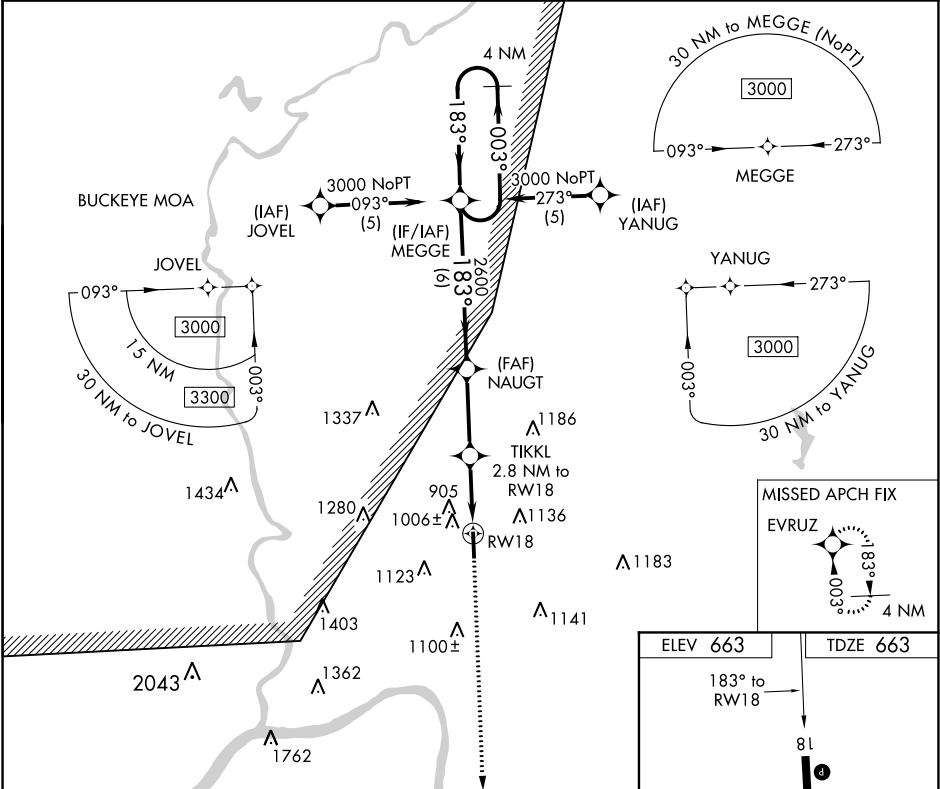
▽

NA

DME/DME RNP-0.3 NA. Visibility reduction by helicopters NA.
When local altimeter setting not received, use Huntington altimeter setting and increase all DA 96 feet and all MDA 100 feet and LPV visibility ¼ mile all Cats, LNAV Cat C, D visibility ½ mile and Circling Cat B, D visibility ¼ mile, Cat C visibility ½ mile.

MISSED APPROACH:
Climb to 3000 direct EVRUZ and hold.

AWOS-3 125.175	HUNTINGTON APP CON 128.4 270.1	UNICOM 122.8 (CTAF) 0
--------------------------	--	---------------------------------



4 NM Holding Pattern

VGSI and RNAV glidepath not coincident (VGSI Angle 3.00/TCH 25).

3000 EVRUZ

MEGGE

NAUGHT

TIKKL 2.8 NM to RW18

RW18

GP 3.00° TCH 40

183°

003°

183°

003°

2600

1580

6 NM

3.1 NM

2.8 NM

*LNAV only

CATEGORY	A	B	C	D
LPV DA	1010-1¼ 347 (400-1¼)			
LNAV MDA	1260-1 597 (600-1)		1260-1½ 597 (600-1½)	1260-1¾ 597 (600-1¾)
CIRCLING	1320-1 657 (700-1)	1380-1 717 (800-1)	1380-2 717 (800-2)	1440-2½ 777 (800-2½)

ELEV 663 TDZE 663

183° to RW18

81

500 X 100

725

36

REIL Rwy 18 and 36 0

MIRL Rwy 18-36 0