

APP CRS <b>074°</b>	Rwy Idg TDZE Apt Elev	<b>4558</b> <b>810</b> <b>813</b>
------------------------	-----------------------------	---

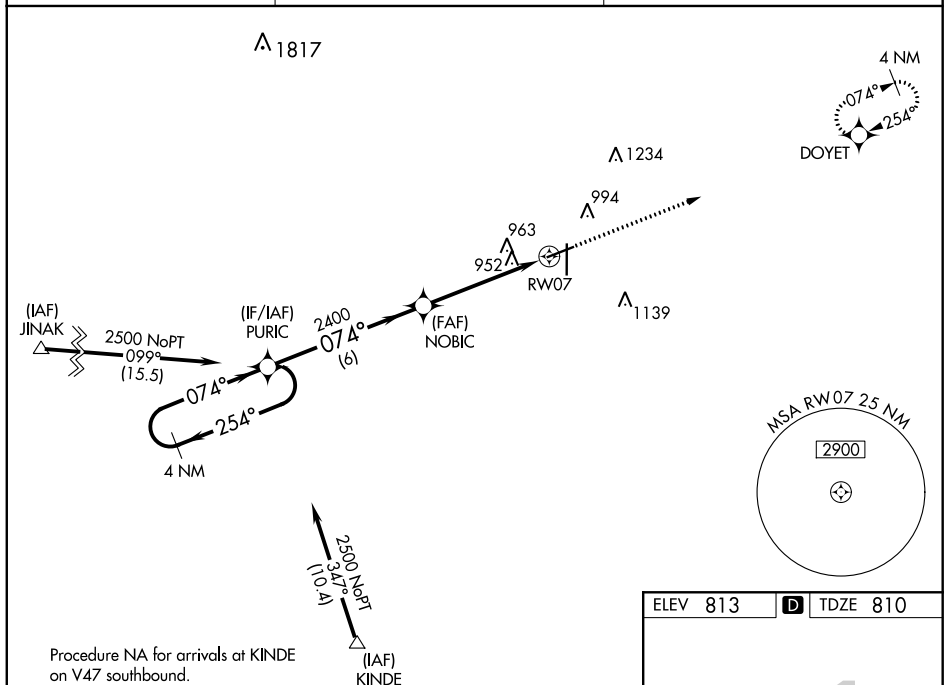
RNAV (GPS) RWY 7  
FINDLAY (FDY)

RNP APCH

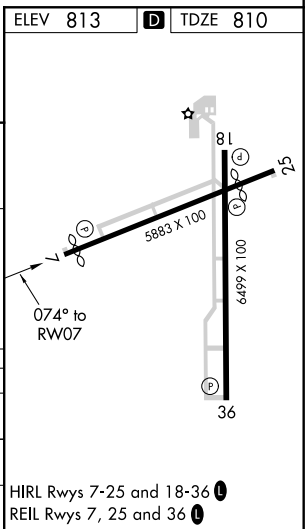
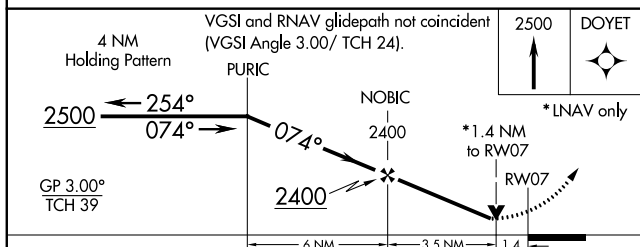
▼ For uncompensated Baro-VNAV systems, LNAV/VNAV NA below -16°C or above 47°C. Baro-VNAV and VDP NA when using Lima Allen County altimeter setting. Rwy 7 helicopter visibility reduction below  $\frac{3}{4}$  SM NA. When local altimeter setting not received, use Lima Allen County altimeter setting: increase DA to 1377 feet; increase all MDAs 80 feet; increase LNAV Cat C visibility  $\frac{1}{8}$  SM and Circling Cat C/D visibility  $\frac{1}{4}$  SM.

**MISSED APPROACH:**  
Climb to 2500 direct  
DOYET and hold.

ASOS <b>132.85</b>	TOLEDO APP CON <b>120.8 317.55</b>	UNICOM <b>122.725 (CTAF) 0</b>
-----------------------	---------------------------------------	-----------------------------------



Procedure NA for arrivals at KINDE  
on V47 southbound.



CATEGORY	A	B	C	D
LNAV/DA	1297-1 $\frac{3}{4}$ 487 (500-1 $\frac{3}{4}$ )			
LNAV MDA	1260-1	450 (500-1)	1260-1 $\frac{3}{8}$ 450 (500-1 $\frac{3}{8}$ )	1260-1 $\frac{1}{2}$ 450 (500-1 $\frac{1}{2}$ )
CIRCLING	1440-1	627 (700-1)	1440-1 $\frac{3}{4}$ 627 (700-1 $\frac{3}{4}$ )	1440-2 627 (700-2)

HIRL Rwys 7-25 and 18-36 **L**  
REIL Rwys 7, 25 and 36 **L**