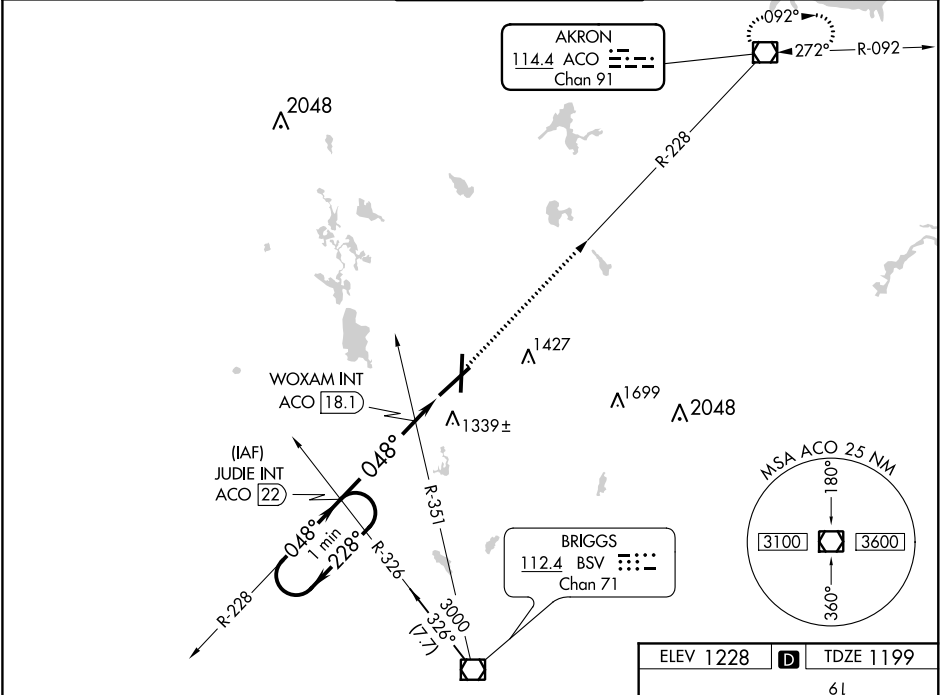


VOR/DME ACO	APP CRS	Rwy Idg	8204
114.4	048°	TDZE	1199
Chan 91		Apt Elev	1228

VOR RWY 5
AKRON-CANTON RGNL (CAK)

			MISSED APPROACH: Climb to 3000 direct ACO VOR/DME and hold.	
ATIS	CLEVELAND APP CON ★	AKRON-CANTON TOWER	GND CON	CLNC DEL
121.05	125.5 269.25	134.75 279.575	121.7 348.6	132.05



One Minute Holding Pattern		VGS1 and descent angles not coincident (VGS1 Angle 3.00/TCH 50).		3000	ACO
		JUDIE INT ACO 22	WOXAM INT ACO 18.1	ACO 16.8	
3000 ← 228°		048° →	048°	1680	
		3.22° TCH 50			
		3.9 NM	1.3 NM		
CATEGORY	A	B	C	D	
S-5	1680/24	481 (500-½)	1680/40 481 (500-¾)	1680/50 481 (500-1)	
CIRCLING	1760-1	532 (600-1)	1760-1½ 532 (600-1½)	1780-2 552 (600-2)	
WOXAM FIX MINIMUMS					
S-5	1600/24	401 (400-½)	1600/40 401 (400-¾)	1600/50 401 (400-1)	
CIRCLING	1760-1	532 (600-1)	1760-1½ 532 (600-1½)	1780-2 552 (600-2)	

