

VOR/DME ACO	APP CRS	Rwy Idg	8204
114.4	227°	TDZE	1226
Chan 91		Apt Elev	1228

VOR RWY 23
AKRON-CANTON RGNL (CAK)

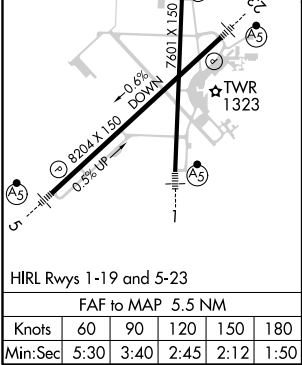
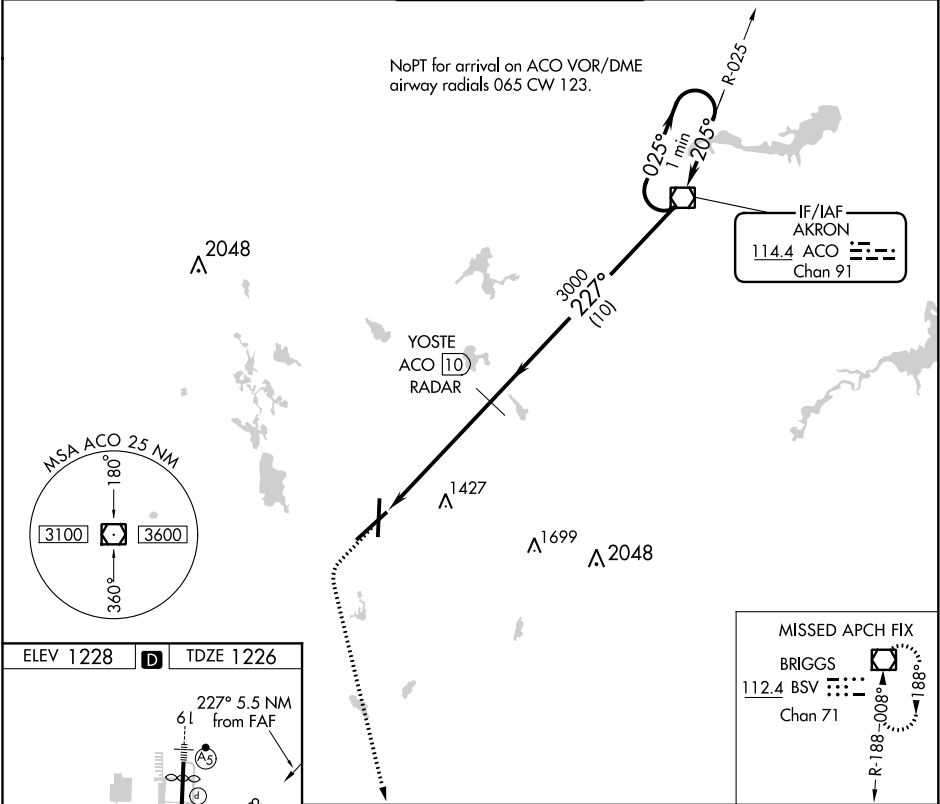
T

DME or RADAR required.

MALSR

MISSED APPROACH: Climb to 3000 then left turn direct BSV VOR/DME and hold.

ATIS 121.05	CLEVELAND APP CON * 125.5 269.25	AKRON-CANTON TOWER 134.75 279.575	GND CON 121.7 348.6	CLNC DEL 132.05
----------------	-------------------------------------	--------------------------------------	------------------------	--------------------



	3000	BSV	YOSTE ACO 10 RADAR	ACO VOR/DME	One Minute Holding Pattern
			ACO 14.2	ACO 15.5	227° 025° 3000
			2.98	TCH 47	205°
	1.3	4.2 NM	10 NM		
CATEGORY	A	B	C	D	
S-23	1680/24	454 (500-½)	1680/40	1680/50	
			454 (500-¾)	454 (500-1)	
CIRCLING	1760-1	532 (600-1)	1760-1½	1780-2	
			532 (600-1½)	552 (600-2)	

EC-2, 03 DEC 2020 to 31 DEC 2020

EC-2, 03 DEC 2020 to 31 DEC 2020