

WAAS CH <b>90220</b> <b>W23A</b>	APP CRS <b>235°</b>	Rwy Idg TDZE <b>1226</b> Apt Elev <b>1228</b>
--	------------------------	---

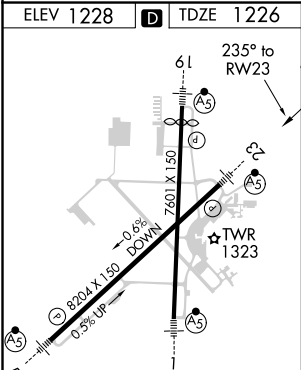
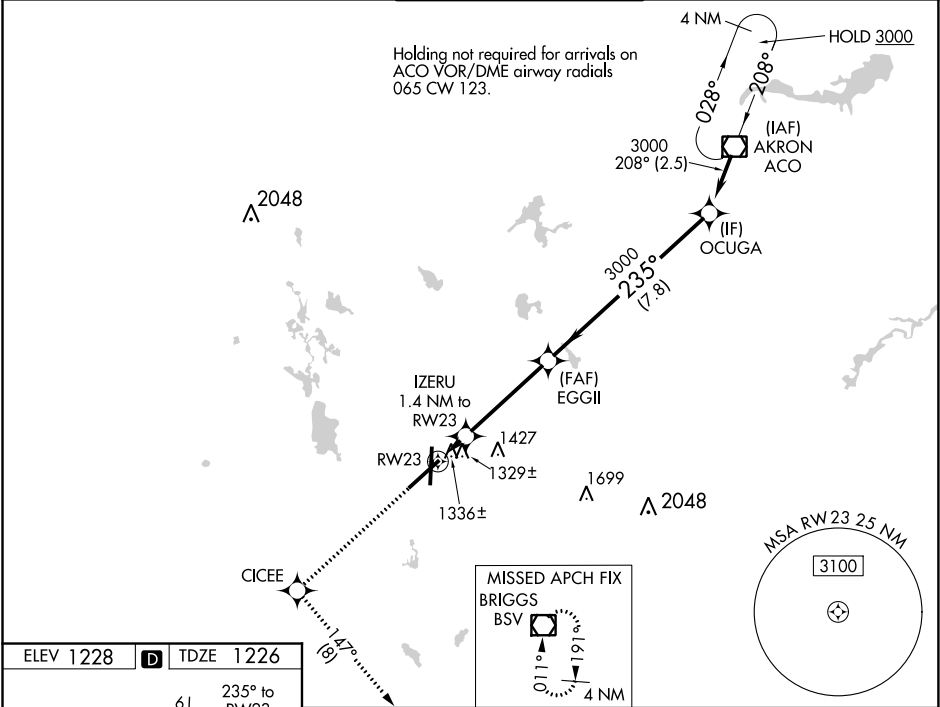
RNAV (GPS) RWY 23  
AKRON-CANTON RGNL (CAK)

**⚠** For uncompensated Baro-VNAV systems, LNAV/VNAV NA below -17°C (2°F) or above 46°C (114°F). DME/DME RNP-0.3 NA. For inoperative MALSR, increase LNAV Cat D visibility to RVR 6000. \*\* RVR 1800 authorized with use of FD or AP or HUD to DA.

**MALSR**

**MISSED APPROACH:** Climb to 3000 direct CICEE and on track 147° to BSV VOR/DME and hold.

ATIS <b>121.05</b>	CLEVELAND APP CON* <b>125.5 269.25</b>	AKRON-CANTON TOWER <b>134.75 279.575</b>	GND CON <b>121.7 348.6</b>	CLNC DEL <b>132.05</b>
-----------------------	---	---	-------------------------------	---------------------------



Procedure Turn NA				
GP 3.00° TCH 45				
CATEGORY	A	B	C	D
LPV DA	**1426/24 200 (200-½)			
LNAV/VNAV DA	1691/60 465 (500-1¼)			
LNAV MDA	1640/24 414 (500-½)	1640/40 414 (500-¾)	1640/50 414 (500-1)	
CIRCLING	1760-1 532 (600-1)	1760-1½ 532 (600-1½)	1780-2 552 (600-2)	