

WAAS CH <b>58020</b> <b>W19A</b>	APP CRS <b>189°</b>	Rwy Idg <b>7000</b> TDZE <b>1218</b> Apt Elev <b>1228</b>
--	------------------------	---

RNAV (GPS) RWY 19  
AKRON-CANTON RGNL (CAK)

**T**

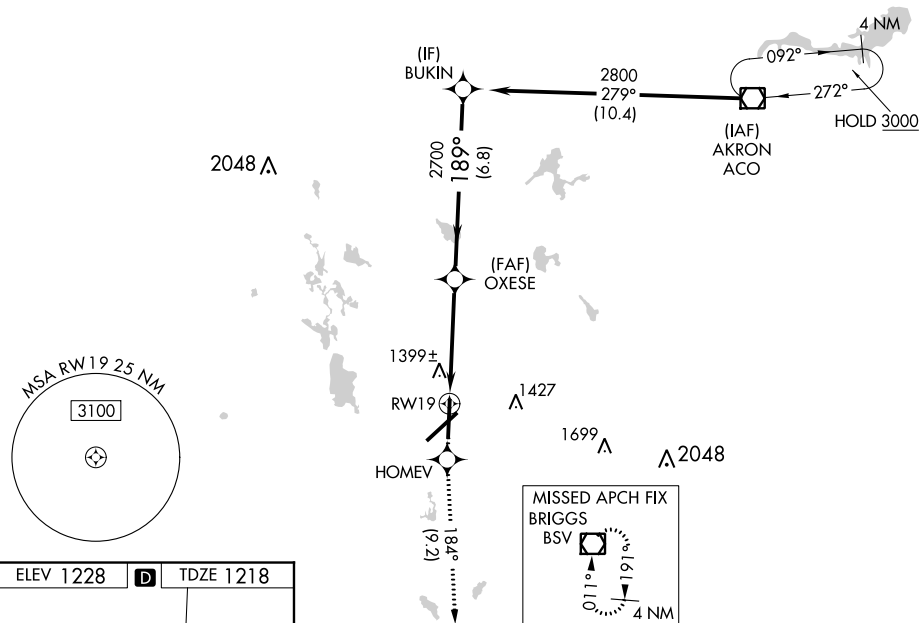
For uncompensated Baro-VNAV systems, LNAV/VNAV NA below -17°C (2°F) or above 46°C (114°F). DME/DME RNP-0.3 NA.  
 \*\* RVR 1800 authorized with use of FD or AP or HUD to DA.

MALSR

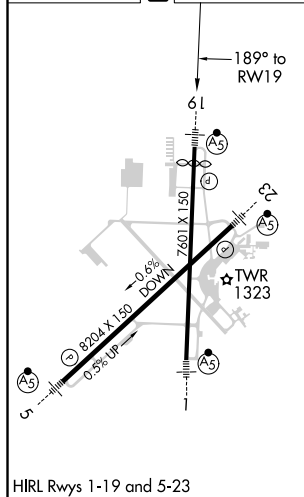
**MISSED APPROACH:** Climb to 3000  
direct HOMEV and on track 184° to  
BSV VOR/DME and hold.

ATIS 121.05	CLEVELAND APP CON ★ 125.5 269.25	AKRON-CANTON TOWER 134.75 279.575	GND CON 121.7 348.6	CLNC DEL 132.05
----------------	-------------------------------------	--------------------------------------	------------------------	--------------------

Holding not required for arrivals on  
ACO VOR/DME airway radials  
347 CW 185.



ELEV 1228	<b>D</b>	TDZE 1218
-----------	----------	-----------



3000 ↑	HOMEV ✱	tr 184°	BSV ◻	Procedure Turn NA			
* LNAV only 				GP 3.00° TCH 53			
CATEGORY	A		B		C		D
LPV DA	**1418/24 200 (200-½)						
LNAV/ VNAV DA	1753-1½ 535 (600-1½)						
LNAV MDA	1700/24 482 (500-½)				1700/40 482 (500-¾)		1700/50 482 (500-1)
CIRCLING	1760-1 532 (600-1)		1760-1½ 532 (600-1½)		1780-2 552 (600-2)		