



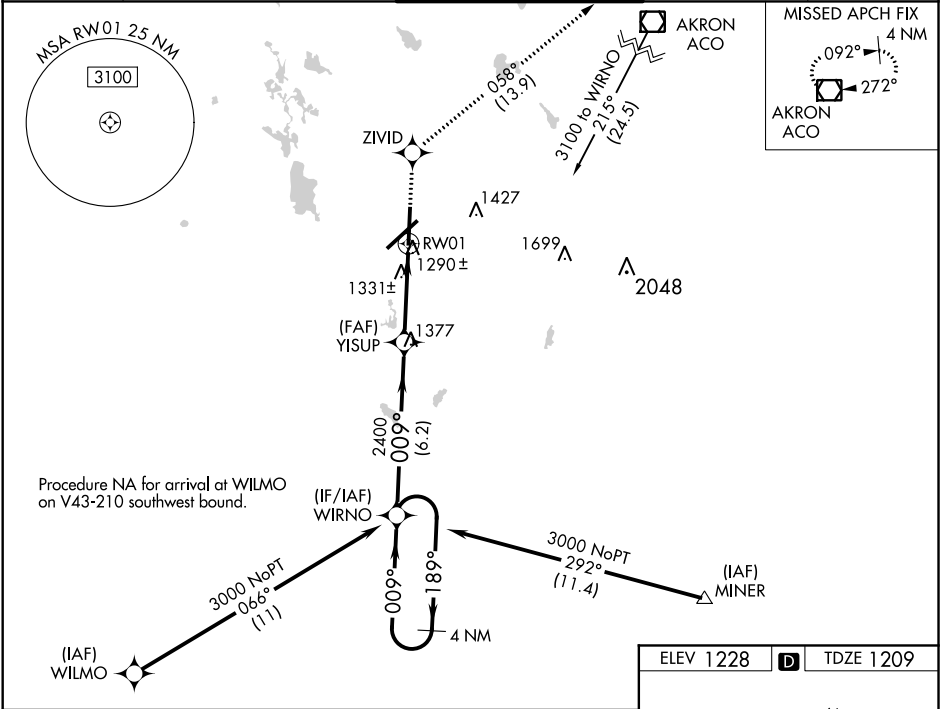
WAAS CH <b>70420</b> <b>W01A</b>	APP CRS <b>009°</b>	Rwy Idg TDZE <b>1209</b> Apt Elev <b>1228</b>
--	------------------------	---

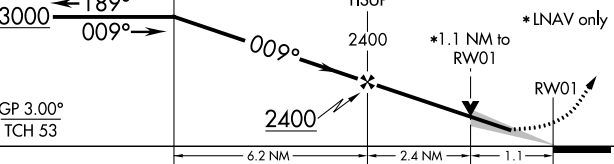
RNAV (GPS) RWY 1

AKRON-CANTON RGNL (CAK)

 For uncompensated Baro-VNAV systems, LNAV/VNAV NA below -17°C (2°F) or above 45°C (113°F). DME/DME RNP-0.3 NA. ** RVR 1800 authorized with use of FD or AP or HUD to DA.	MALSR 	MISSED APPROACH: Climb to 3000 direct ZIVID and on track 058° to ACO VOR/DME and hold.
---	---	--

ATIS <b>121.05</b>	CLEVELAND APP CON * <b>125.5 269.25</b>	AKRON-CANTON TOWER <b>134.75 279.575</b>	GND CON <b>121.7 348.6</b>	CLNC DEL <b>132.05</b>
-----------------------	--	---	-------------------------------	---------------------------



4 NM Holding Pattern				
WIRNO				
				
CATEGORY	A	B	C	D
LPV DA**	1409/24 200 (200-½)			
LNAV/VNAV DA	1542/40 333 (400-¾)			
LNAV MDA	1600/24 391 (400-½)		1600/50 391 (400-1)	
CIRCLING	1760-1 532 (600-1)		1760-1½ 532 (600-1½)	
			1780-2 552 (600-2)	

