
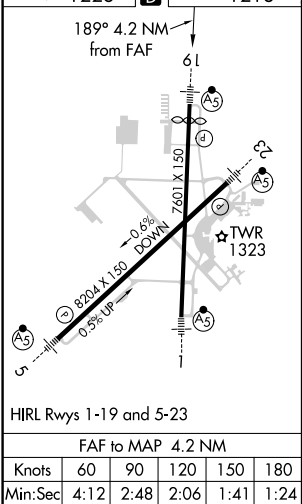
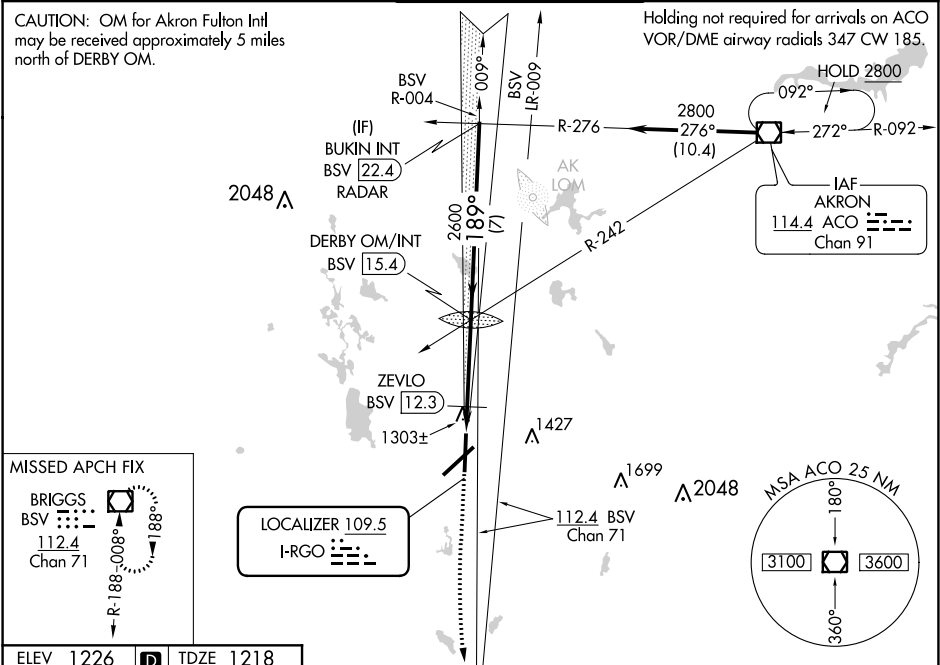


LOC I-RGO	APP CRS	Rwy Idg	7000
109.5	189°	TDZE	1218
		Apt Elev	1226

ILS or LOC RWY 19  
AKRON-CANTON RGNL (CAK)

<b>⚠</b>	<b>** RVR 1800 authorized with the use of FD or AP or HUD to DA. For inoperative ALS, increase CAT C/D visibility to RVR 6000. ZEVLO fix minimums: For inoperative ALS, increase CAT C/D visibility to RVR 5500.</b>		<b>MALSR</b> 	<b>MISSED APPROACH: Climb to 1700 then climbing left turn to 3000 direct BSV VOR/DME and hold.</b>	
<b>ATIS</b> <b>121.05</b>	<b>CLEVELAND APP CON *</b> <b>125.5 269.25</b>	<b>AKRON-CANTON TOWER</b> <b>134.75 279.575</b>		<b>GND CON</b> <b>121.7 348,6</b>	<b>CLNC DEL</b> <b>132.05</b>



1700 ↑	3000 ↙	BSV 	DERBY OM/INT BSV 15.4	BUKIN INT BSV 22.4 RADAR
CATEGORY	A	B	C	D
S-ILS 19	**1418/24 200 (200-½)			
S-LOC 19	1620/24 402 (400-½)	1620/40 402 (400-¾)		
CIRCLING	1760-1 534 (600-1)	1760-1½ 534 (600-1½)	1780-2 554 (600-2)	
ZEVLO FIX MINIMUMS				
S-LOC 19	1580/24 362 (400-½)	1580/40 362 (400-¾)		
CIRCLING	1760-1 534 (600-1)	1760-1½ 534 (600-1½)	1780-2 554 (600-2)	