

WAAS CH 82109 W05A	APP CRS 049°	Rwy Idg 9020 TDZE 578 Apt Elev 589
--	------------------------	---

RNAV (GPS) RWY 5

TERRE HAUTE RGNL (HUF')

RNP APCH.

▼

ASR

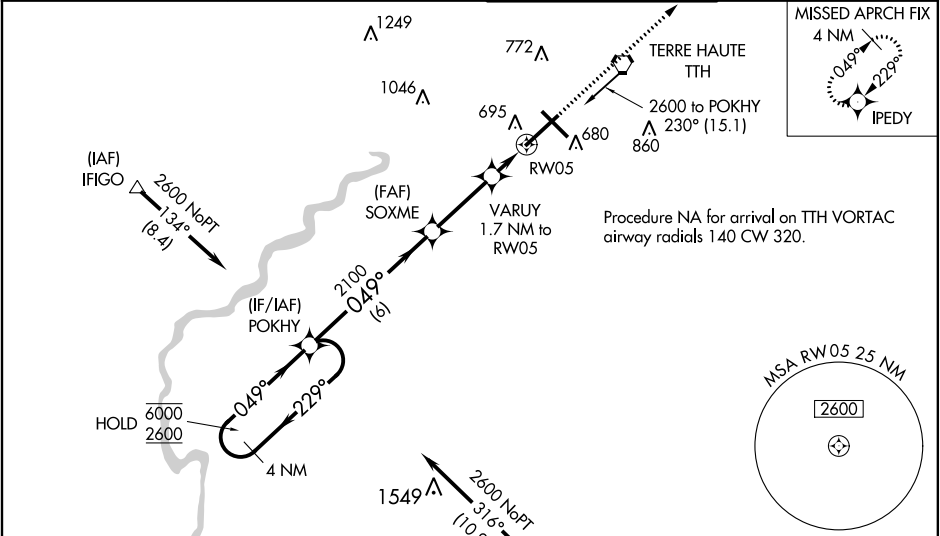
For uncompensated Baro-VNAV systems, LNAV/VNAV NA below -16°C (4°F) or above 47°C (116°F). VDP and Baro-VNAV NA when using Paris altimeter setting. When local altimeter setting not received, use Paris altimeter setting and increase all DA 61 feet, and all MDA 80 feet. Increase LPV visibility all Cats and LNAV Cat C visibility ¼ SM and Circling Cat C/D visibility ¼ SM. For inoperative ALS, increase LPV all Cats visibility to RVR 4500, LNAV/VNAV all Cats and LNAV Cat C/D visibility to RVR 5500, when using Paris altimeter setting increase LPV and LNAV/VNAV visibility all Cats to RVR 6000, increase LNAV Cat C/D visibility to 1 3⁄8 SM.

MALS

AS

MISSED APPROACH:
Climb to 2400 direct
IPEDY and hold.

ATIS 127.5 269.375	HULMAN APP CON 125.45 339.8	HULMAN TOWER 134.725 239.0	GND CON 121.6 348.6
------------------------------	---------------------------------------	--------------------------------------	-------------------------------



4 NM Holding Pattern POKHY

6000
2600

GP 3.00°
TCH 40

229°
049°

POKHY

SOXME

VARUY 1.7 NM to RW05

2400 IPEDY

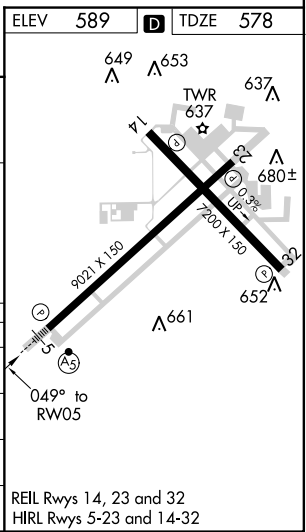
*1140

*1 NM to RW05

RW05

*LNAV only.

CATEGORY	A	B	C	D
LPV DA	880/24 302 (300-½)			
LNAV/ VNAV DA	929/40 351 (400-¾)			
LNAV MDA	940/24	362 (400-½)	940/35 362 (400-¾)	940/50 362 (400-1)
CIRCLING	1020-1 431 (500-1)	1040-1 451 (500-1)	1220-1¾ 631 (700-1¾)	1220-2 631 (700-2)



EC-2, 03 DEC 2020 to 31 DEC 2020

EC-2, 03 DEC 2020 to 31 DEC 2020