

LOC I-ILN 110.7	APP CRS 223°	Rwy Idg 10701 TDZE 1077 Apt Elev 1077
---------------------------	------------------------	--

ILS RWY 22R (SA CAT I)
WILMINGTON AIR PARK (ILN)

DME or RADAR required for procedure entry.



Simultaneous approach authorized. Requires specific OPSPEC, MSPEC, or LOA approval and use of HUD to DH. Procedure NA when control tower closed. DME from MXQ VOR/DME. Simultaneous reception of I-ILN and MXQ DME required.

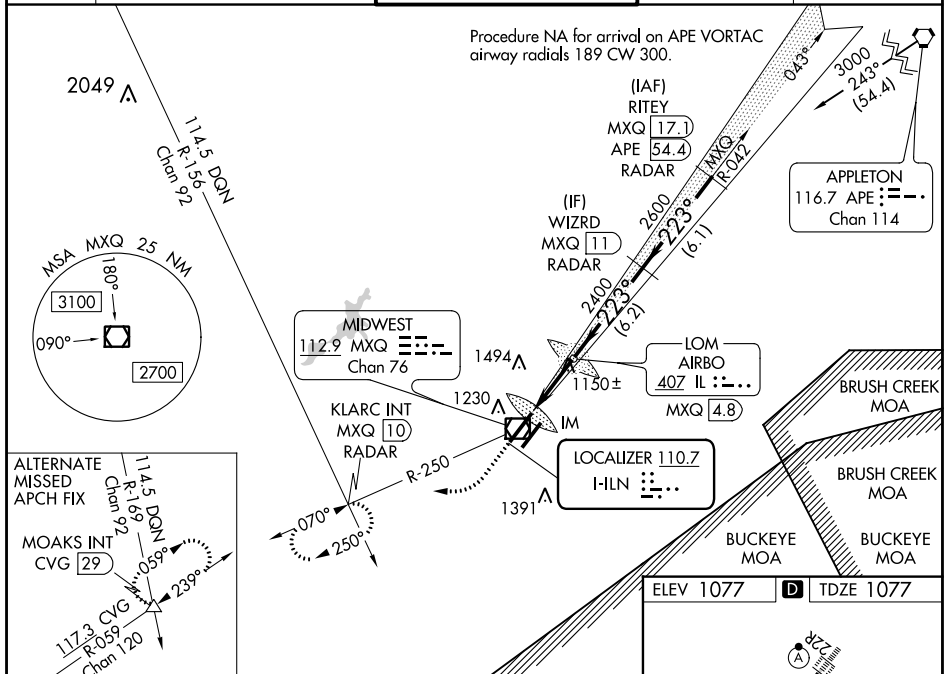
ALSF-2



MISSED APPROACH: Climb to 1600 then climbing right turn to 3500 on MXQ VOR/DME R-250 to KLARC INT/MXQ 10 DME/RADAR and hold, continue climb-in-hold to 3500.

ATIS 124.925	COLUMBUS APP CON 118.85 269.275	WILMINGTON TOWER ★ 119.475 (CTAF) 0	GND CON 121.6	CLNC DEL 128.85
------------------------	---	---	-------------------------	---------------------------

Procedure NA for arrival on APE VORTAC
airway radials 189 CW 300.



1600

3500

KLARC INT
MXQ 10
RADAR

VGS1 and ILS glidepath not coincident
(VGS1 Angle 3.00/TCH 71).

WIZRD INT
MXQ 11
RADAR

AIRBO
LOM
MXQ 4.8

2600

2400

223°

3.8 NM

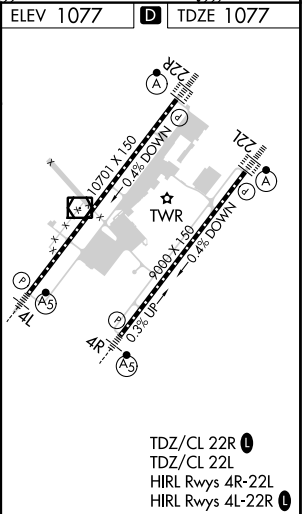
6.2 NM

1125'

GS 3.00°
TCH 55

CATEGORY	A	B	C	D
S-ILS 22R				
	RA 148/14 150 DA 1227			

SA CATEGORY I ILS - SPECIAL AIRCREW
& AIRCRAFT CERTIFICATION REQUIRED



ILS RWY 22R (SA CAT I)