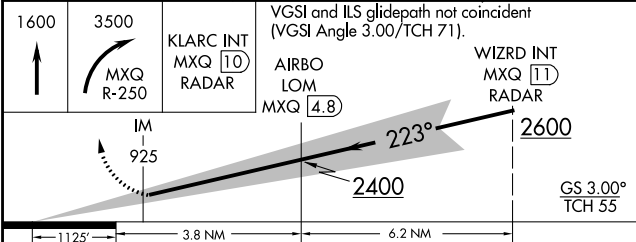
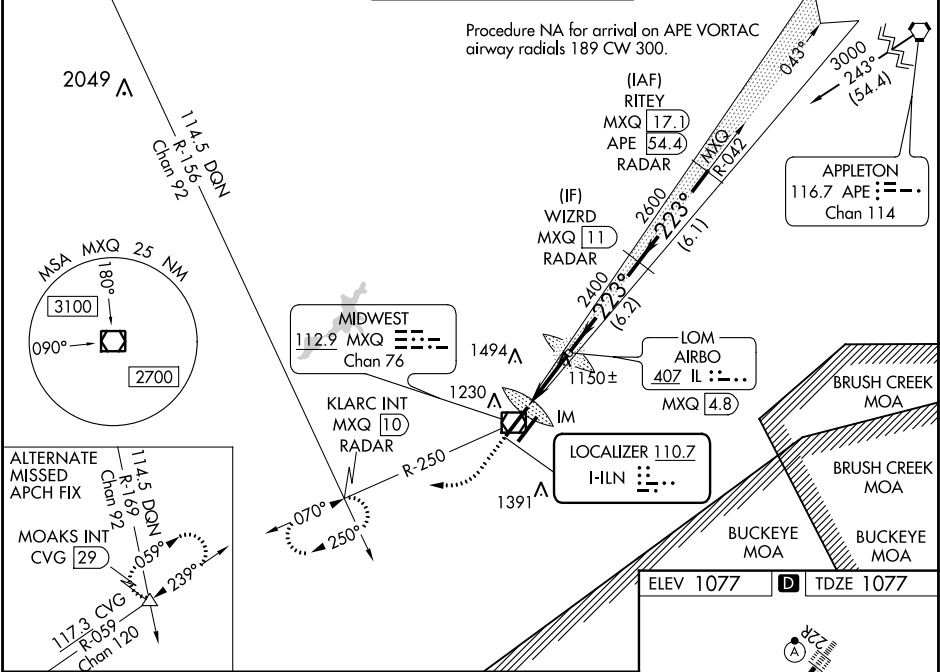


LOC I-ILN 110.7	APP CRS 223°	Rwy Idg 10701 TDZE 1077 Apt Elev 1077
---------------------------	------------------------	--

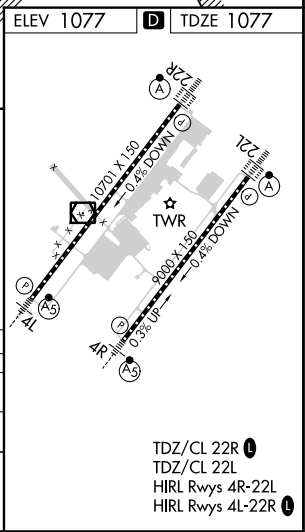
ILS RWY 22R (CAT II & III)
WILMINGTON AIR PARK (ILN)

DME or RADAR required for procedure entry.		ALSF-2 	MISSED APPROACH: Climb to 1600 then climbing right turn to 3500 on MXQ VOR/DME R-250 to KLARC INT/MXQ 10 DME/RADAR and hold, continue climb-in-hold to 3500.	
 Simultaneous approach authorized. Procedure NA when control tower closed. DME from MXQ VOR/DME. Simultaneous reception of I-ILN and MXQ DME required.				
ATIS 124.925	COLUMBUS APP CON 118.85 269.275	WILMINGTON TOWER ★ 119.475 (CTAF) 0	GND CON 121.6	CLNC DEL 128.85



CATEGORY	A	B	C	D
S-ILS 22R	CAT II	RA 106/12	100 DA 1177	
S-ILS 22R	CAT III	RVR 06		

CATEGORY II & III ILS - SPECIAL AIRCREW & AIRCRAFT CERTIFICATION REQUIRED



EC-2, 03 DEC 2020 to 31 DEC 2020

EC-2, 03 DEC 2020 to 31 DEC 2020