

WAAS CH 58003 W14A	APP CRS 136°	Rwy Idg 5502 TDZE 583 Apt Elev 583
--	------------------------	---

RNAV (GPS) RWY 14
FREEMAN MUNI (SER)

FREEMAN MUNI (SER)

Baro-VNAV and YDP NA when using Louisville Muhammad Ali Intl altimeter setting. For uncompensated Baro-VNAV systems, LNAV/VNAV NA below -16°C (4°F) or above 54°C (130°F). When local altimeter setting not received, use Louisville Muhammad Ali Intl altimeter setting and increase all DA 117 feet and all MDA 120 feet; increase LPV all Cats, LNAV/VNAV all Cats and Circling Cat C/D visibility ½ mile, and LNAV Cat C/D visibility ¼ mile. DME/DME RNP-0.3 NA. Helicopter visibility reduction below ¾ SM NA.

MISSED APPROACH:
Climb to 2400 direct
ZEKAM and hold.

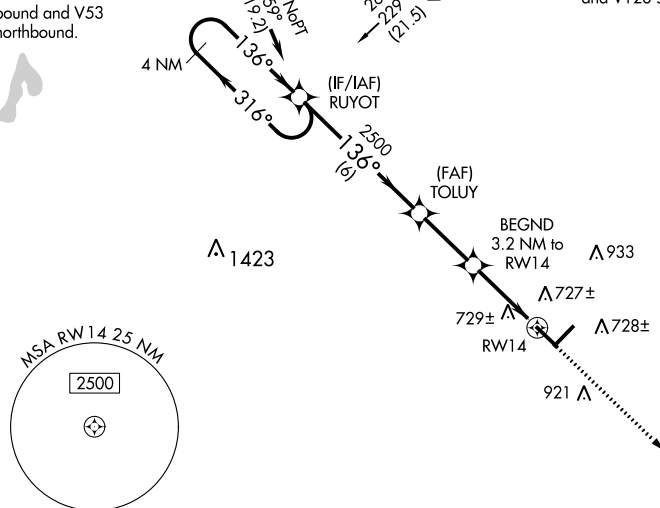
AWOS-3 119.425	INDIANAPOLIS CENTER 124.775 269.45	UNICOM 122.8 (CTAF) 0
--------------------------	--	---------------------------------

Procedure NA for arrivals at MOUTH on V221 northeast bound and V53 northbound.

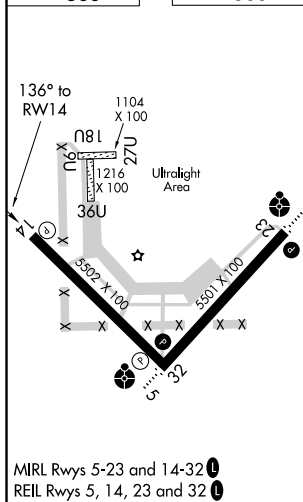
(IAF)
MOLIT

ECEE

Procedure NA for arrivals at DECEE on V51 northbound and V128 southeast bound.



ELEV 583		TDZE 583
----------	--	----------

MIRI Rwyys 5-23 and 14-32 **L**

SEYMOUR, INDIANA

Amdt 1 16OCT14

38°55'N-85°54'W

FREEMAN MUNI (SER)

RNAV (GPS) RWY 14

4 NM Holding Pattern

RUYOT

2600

316°

136°

GS 3.00° TCH 40

TOLUY

2500

BEGND 3.2 NM to RW14

*1.2 NM to RW14

*1.2 NM to RW14

*1.2 NM to RW14

*1.2 NM to RW14

6 NM

2.7 NM

2 NM

1.2 NM

2400

ZEKAM

*LNAV only.

CATEGORY	A	B	C	D
LPV DA		860-1	277 (300-1)	
INAV/ VNAV DA		1037-1½	454 (500-1½)	
INAV MDA	980-1	397 (400-1)	980-1½	397 (400-1½)
CIRCLING	1040-1 457 (500-1)	1080-1 497 (500-1)	1300-2 717 (800-2)	1300-2¼ 717 (800-2¼)