

WAAS CH 90421 W36A	APP CRS 004°	Rwy Idg 5497 TDZE 384 Apt Elev 422
--	------------------------	---

RNAV (GPS) RWY 36

EVANSVILLE RGNL (EVV)

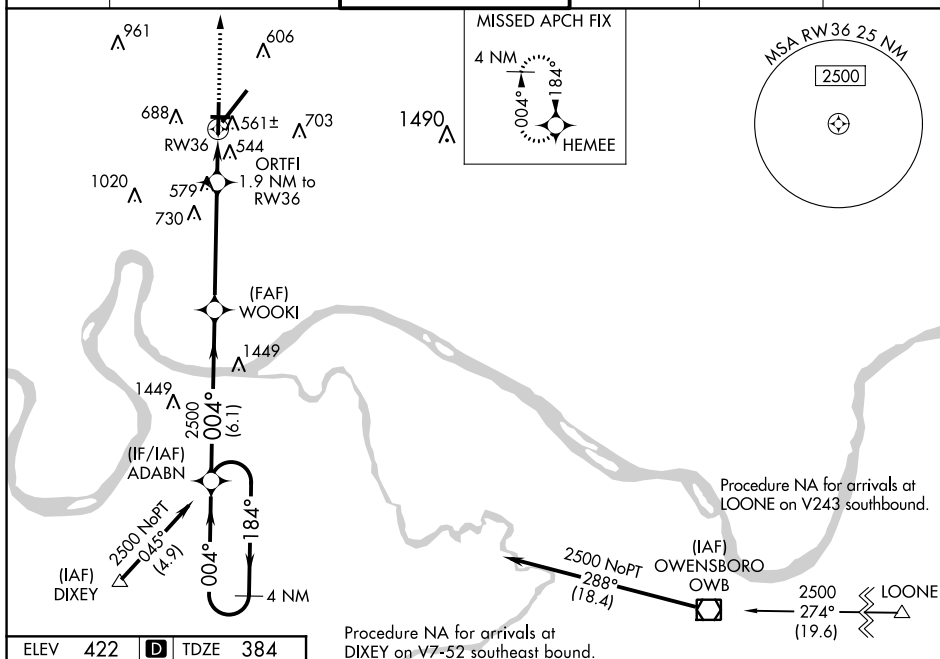


 ASR

For uncompensated Baro-VNAV systems, LNAV/VNAV NA below -15°C (5°F) or above 54°C (130°F). DME/DME RNP-0.3 NA. Circling Rwy 9 NA at night. Helicopter visibility reduction below $\frac{3}{4}$ SM NA.

MISSED APPROACH: Climb to 2500 direct HEMEE and hold.

ATIS 120.2	EVANSVILLE APP CON ★ 124.025 290.9	EVANSVILLE TOWER ★ 118.7(CTAF) 257.8	GND CON 121.9	CLNC DEL 126.6	UNICOM 122.95
---------------	---------------------------------------	---	------------------	-------------------	------------------



ELEV 422 TDZE 384

HIRL Rwy 4-22 and 18-36

REIL Rwy 4, 18, and 36

MIRL Rwy 9-27

81 TWR 499

6286 X 130

6349 X 75

8021 X 130

434

0.7% DOWN

463

391

530

553

36

447

004° to RW36

4 NM Holding Pattern

ADABN

WOOKI 2500

ORTFI 1.9 NM to RW36

*1.3 NM to RW36

*1040

GP 3.00° TCH 55

6.1 NM

4.6 NM

0.6 NM

1.3

VGSI and RNAV glidepath not coincident (VGSI Angle 3.00/TCH 29).

2500

HOLDING PATTERN

HEMEE

*RNAV only