

WAAS
CH **50421**
W18A

APP CRS
184°

Rwy Idg
TDZE **396**
Apt Elev **422**

RNAV (GPS) RWY 18

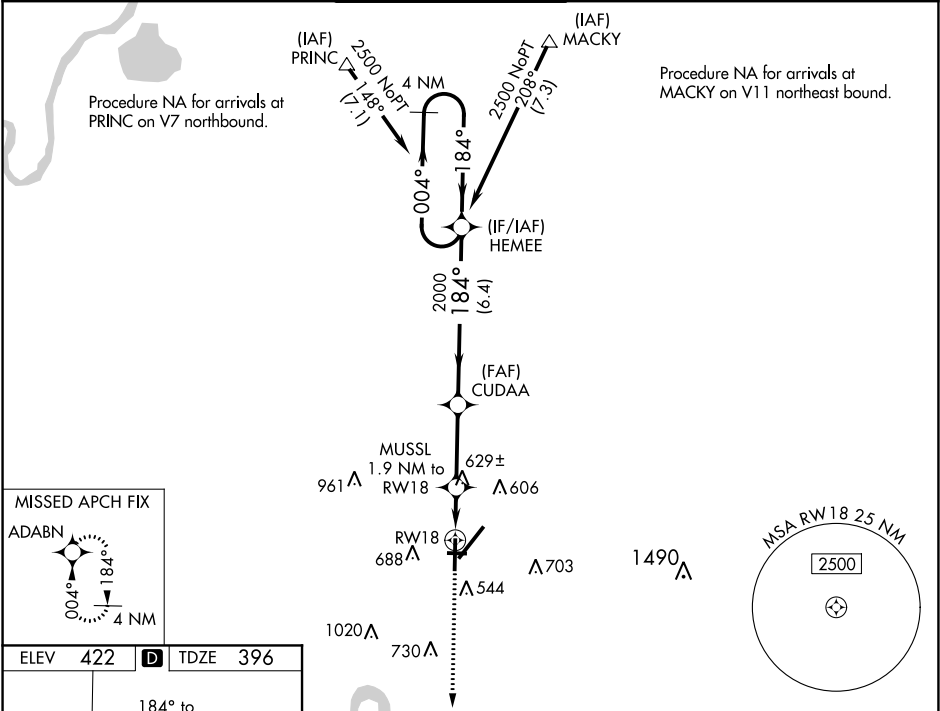
EVANSVILLE RGNL (E^{vv})

ASR

For uncompensated Baro-VNAV systems, LNAV/VNAV NA below -15°C (5°F) or above 54°C (130°F). DME/DME RNP-0.3 NA. Circling Rwy 9 NA at night. Helicopter visibility reduction below ¾ SM NA.

MISSED APPROACH:
Climb to 2500 direct ADABN and hold.

ATIS 120.2	EVANSVILLE APP CON ★ 124.025 290.9	EVANSVILLE TOWER ★ 118.7 (CTAF) 0 257.8	GND CON 121.9	CLNC DEL 126.6	UNICOM 122.95
----------------------	--	--	-------------------------	--------------------------	-------------------------



2500 ADABN		VGSI and RNAV glidepath not coincident (VGSI Angle 3.00/TCH 50).		4 NM Holding Pattern	
*LNAV only		CUDAA		HEMEE	
*1.1 NM to RW18		2000		004° → 2500	
*1.9 NM to RW18		MUSSEL		← 184°	
1.1		0.8		GP 3.00° TCH 60	
3 NM		6.4 NM			
CATEGORY	A	B	C	D	
LPV DA	596-¾		200 (200-¾)		
LNAV/VNAV DA	931-1¾		535 (600-1¾)		
LNAV MDA	880-1		880-1⅔		484 (500-1⅔)
CIRCLING	920-1 498 (500-1)	1040-1 618 (700-1)	1040-1¾ 618 (700-1¾)	1040-2 618 (700-2)	