

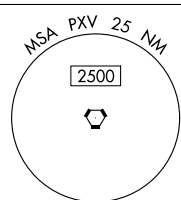
ILS or LOC RWY 22

Circling Rwy 9 NA at night.
RVR 1800 authorized with use of FD or AP or HUD to DA.




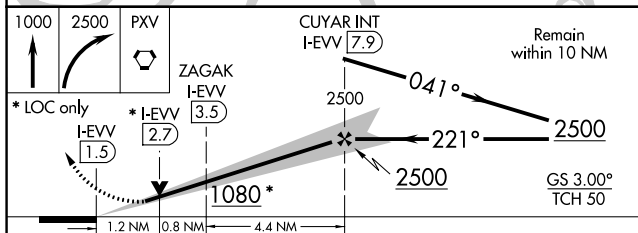
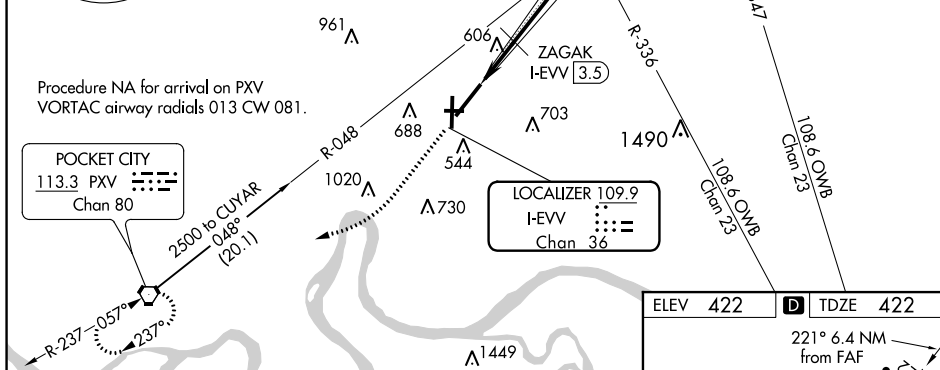
MISSED APPROACH: Climb to 1000 then climbing right turn to 2500 direct PXV VORTAC and hold.

OWENSBORO ALT MISSED
OWB APCH FIX
108.6
Chan 23
310°
130°
R-130
2500 NpPT (17.4)
176°
241
17.4
21.5



Procedure NA for arrival on PXV
VORTAC airway radials 013 CW 081.

POCKET CITY
113.3 PXV 
Chan 80



CATEGORY	A	B	C	D
S-ILS 22	# 622/24		200 (200-½)	
S-LOC 22	1080/24	658 (700-½)	1080-1 ³ / ₈	658 (700-1 ³ / ₈)
C CIRCLING	1080-1	658 (700-1)	1080-1 ⁷ / ₈ 658 (700-1 ⁷ / ₈)	1080-2 658 (700-2)
ZAGAK FIX MINIMUMS (DME REQUIRED)				
S-LOC 22	860/24	438 (500-½)	860/40	438 (500-¾)
C CIRCLING	920-1 498 (500-1)	1040-1 618 (700-1)	1040-1 ³ / ₄ 618 (700-1 ³ / ₄)	1040-2 618 (700-2)