

PERU, INDIANA

TACAN or VOR RWY 23

VORTAC GUS 108.45 Chan 21 (Y)	APCH CRS 221°	Rwy ldg 12,501 TDZE 799 Arprt Elev 811
---	-------------------------	---

AL-470 [USAF]

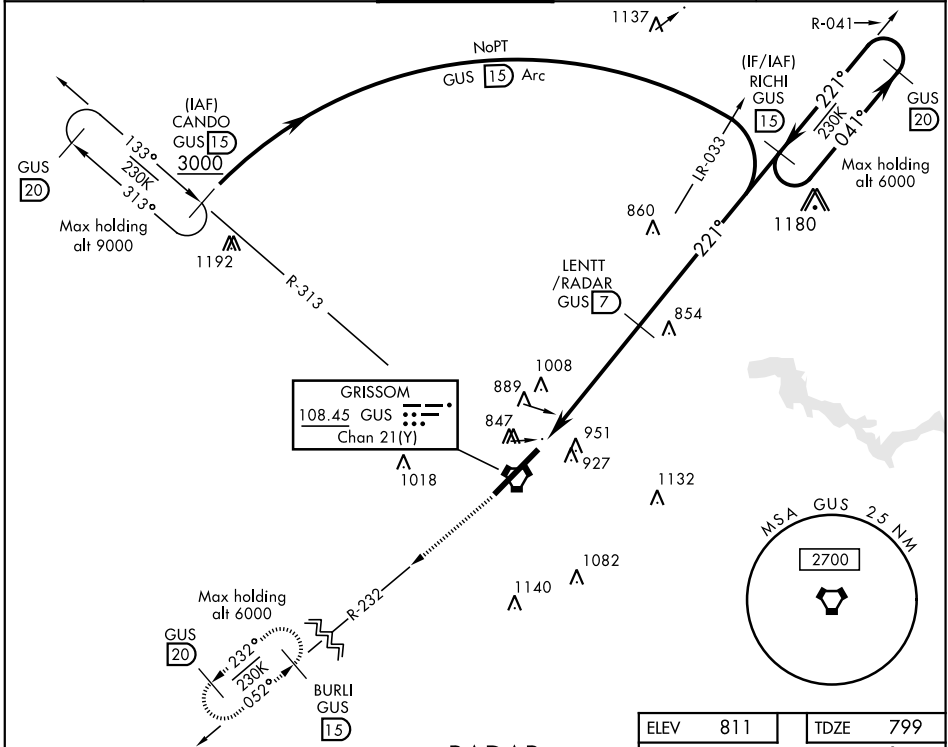
GRISSOM ARB (KGUS)

* When ALS inop, increase CAT AB RVR to 55 and vis to 1 mile, CAT CDE vis to 1½ miles.



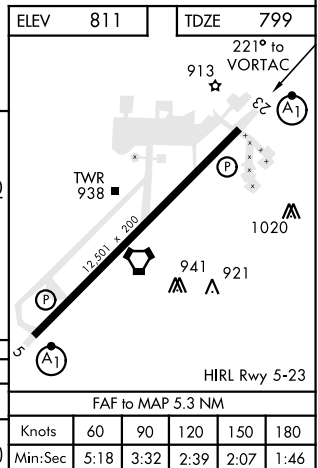
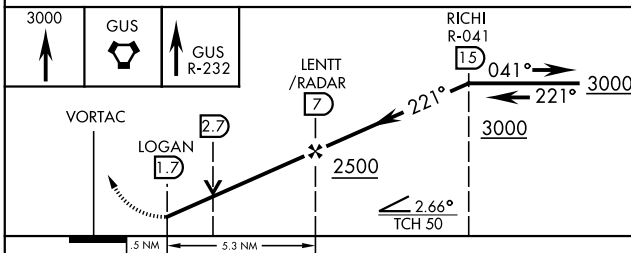
MISSED APPROACH: Climb to 3000 on the GUS VORTAC R-232 to BURLI (GUS R-232/15 DME) and hold.

ATIS 108.45 270.8	GRISSOM APP CON 121.05 338.275 EAST 123.85 291.675 WEST	GRISSOM TOWER ★ 133.7 290.45	GND CON 128.425 275.8	CLNC DEL 123.7 318.2
-----------------------------	---	--	---------------------------------	--------------------------------



EMERG SAFE ALT 100 NM 3500

RADAR or DME REQUIRED



CATEGORY	A	B	C	D	E
S-TAC/VOR 23 *	1260/24 461 (500-½)		1260/50 461 (500-1)		
CIRCLING	1340-1 529 (600-1)		1400-1½ 589 (600-1½)	1400-2 589 (600-2)	1440-2¼ 629 (700-2¼)

FAF to MAP 5.3 NM					
Knots	60	90	120	150	180
Min:Sec	5:18	3:32	2:39	2:07	1:46

PERU, INDIANA

40°39'N-86°09'W

GRISSOM ARB (KGUS)

Amdt 6 06DEC18

TACAN or VOR RWY 23