

PERU, INDIANA

# RNAV (GPS) RWY 23

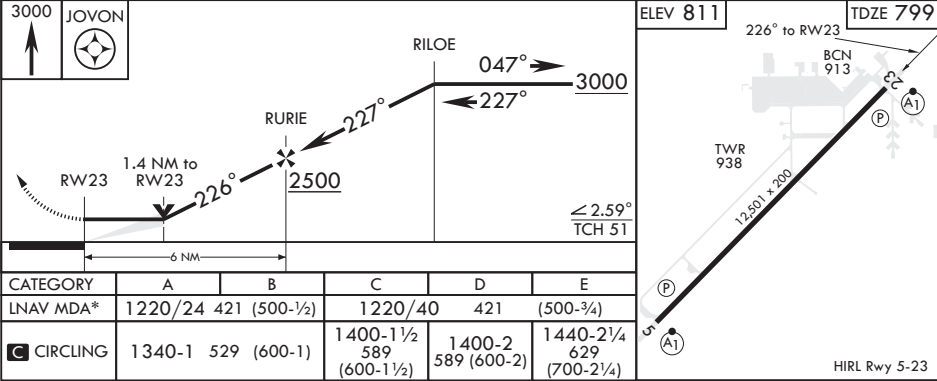
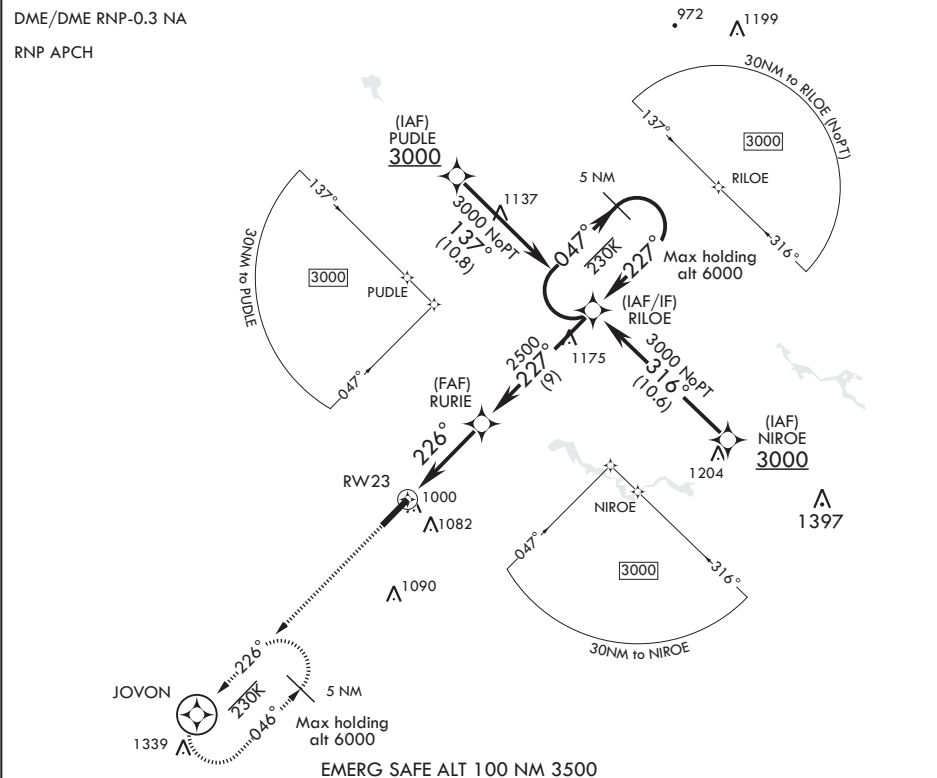
APCH CRS	Rwy Idg	12,501
226°	TDZE	799
	Arpt Elev	811

AL-470 (USAF)

GRISSOM ARB (KGUS)

* When ALS inop, increase CAT AB RVR to 55 and vis to 1 mile, CAT CDE vis to 1 1/4 miles.	ALSF-1 	MISSED APPROACH: Climb to 3000 direct JOVON and hold.
---	---	---

ATIS 108.45 270.8	APP CON/DEP CON 121.05 338.275 E 123.85 291.675 W	TOWER 133.7 290.45	GND CON 128.425 275.8	CLNC DEL 123.7 318.2
----------------------	---	-----------------------	--------------------------	-------------------------



PERU, INDIANA

40°39'N - 86°09'W

GRISSOM ARB (KGUS)

Amdt 5 31JAN19

# RNAV (GPS) RWY 23