

PERU, INDIANA

ILS or LOC RWY 5

LOC I-GUS 109.5	APCH CRS 046°	Rwy Idg 12,501 TDZE 811 Arprt Elev 811
---------------------------	-------------------------	---

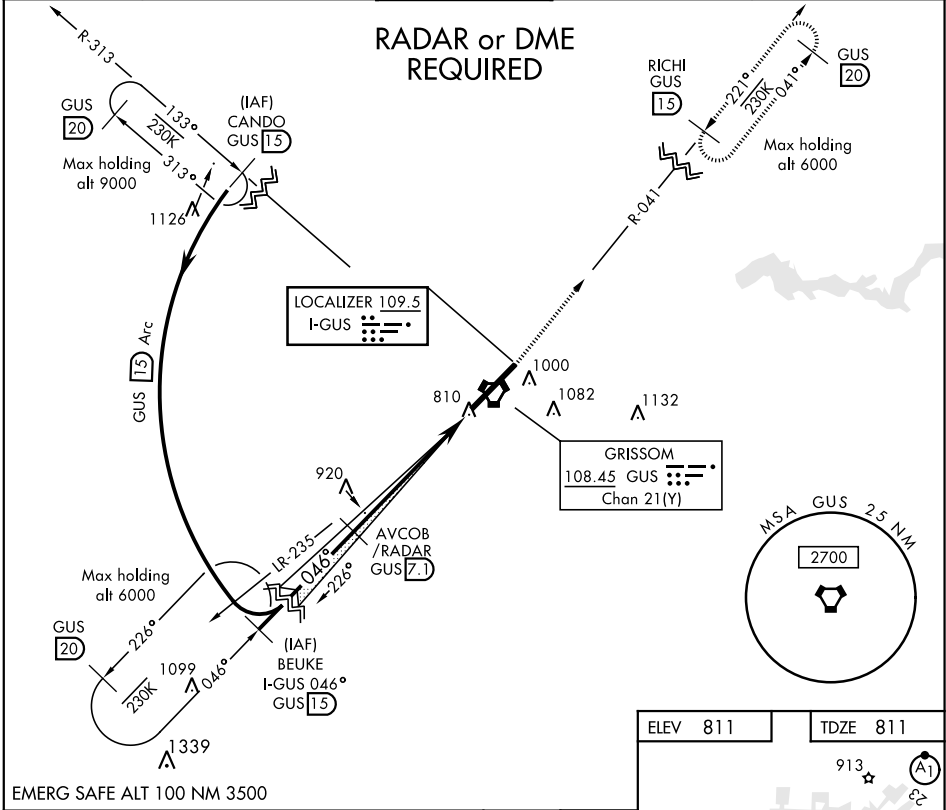
AL-470 [USAF]

GRISSOM ARB (KGUS)

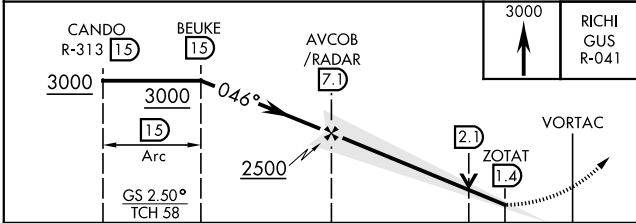
* When ALS inop, increase CAT ABCDE RVR to 40 and vis to ¾ mile.
 ** When ALS inop, increase CAT ABCDE RVR to 55 and vis to 1 mile.


ALSF-1
 MISSED APPROACH: Climb to 3000 on the GUS R-041 to RICHI (GUS R-041/15 DME) and hold.

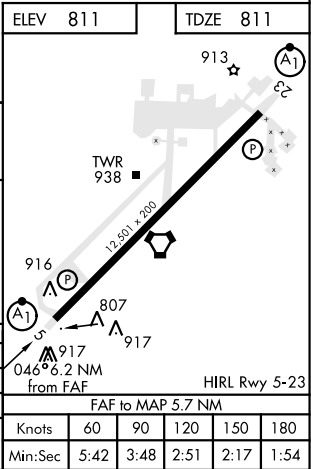
ATIS 108.45 270.8	GRISSOM APP CON 121.05 338.275 EAST 123.85 291.675 WEST	GRISSOM TOWER ★ 133.7 290.45	GND CON 128.425 275.8	CLNC DEL 123.7 318.2
-----------------------------	---	--	---------------------------------	--------------------------------



EMERG SAFE ALT 100 NM 3500



			<div><div></div><div>5.7 NM</div><div></div></div>		<div><div></div><div>.5 NM</div><div></div></div>	
CATEGORY	A	B	C	D	E	
S-ILS 5 *	1011/24		200	(200-½)		
S-LOC 5 **	1180/24	369 (400-½)	1180/35 369 (400-¾)			
 CIRCLING	1340-1	529 (600-1)	1400-1½ 589 (600-1½)	1400-2 589 (600-2)	1440-2¼ 629 (700-2¼)	



PERU, INDIANA

40°39'N-86°09'W

GRISSOM ARB (KGUS)

Amtd 8 06DEC18

ILS or LOC RWY 5