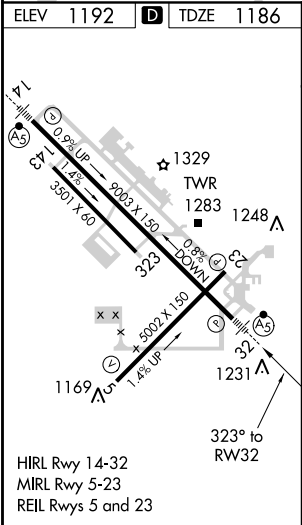
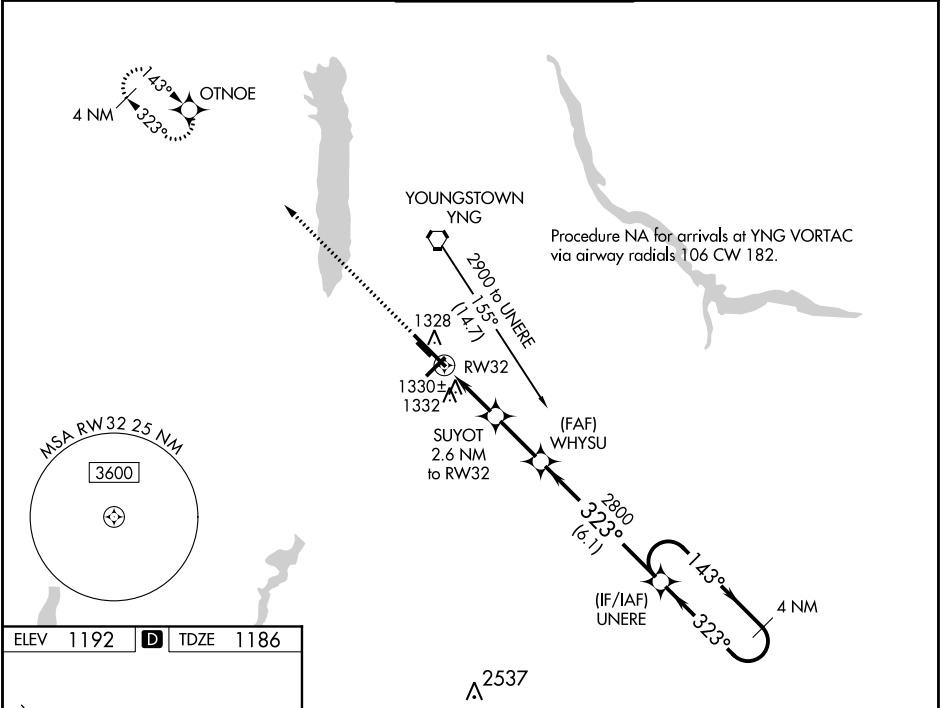


WAAS CH 97406 W32A	APP CRS 323°	Rwy Idg TDZE 1186 Apt Elev 1192
--	------------------------	---

RNAV (GPS) RWY 32

YOUNGSTOWN-WARREN RGNL (YNG)

RNP APCH. ASR For uncompensated Baro-VNAV systems, LNAV/VNAV NA below -17°C or above 46°C. For inop ALS, increase LPV all Cats visibility to RVR 5000 and LNAV Cat D visibility to RVR 6000. Circling Rwy 5 NA at night.		MAISR 	MISSED APPROACH: Climb to 2900 direct OTNOE and hold.	
ATIS 123.75	YOUNGSTOWN APP CON * 133.95 322.3	YOUNGSTOWN TOWER 119.5 263.0	GND CON 121.9 275.8	CLNC DEL 118.25



2900 ↑ *LNAV only		OTNOE ✧		SUYOT 2.6 NM to RW32		WHYSU 2800		UNERE 4 NM Holding Pattern		2900 143° → ← 323°	
RW32 1.1		1.1 NM to RW32		1.5		2.3 NM		2800 323°		GP 3.00° TCH 35	
CATEGORY		A		B		C		D			
LPV DA				1458/24		272 (300-½)					
LNAV/VNAV DA				1639/60		453 (500-1¼)					
LNAV MDA				1580/24		394 (400-½)				1580/50 394 (400-1)	
CIRCLING		1640-1 448 (500-1)		1660-1 468 (500-1)		1740-1½ 548 (600-1½)				1760-2 568 (600-2)	