

WAAS  
CH **50108**  
**W27A**

APP CRS  
**272°**

Rwy Idg  
TDZE **774**  
Apt Elev **798**

RNAV (GPS) RWY 27L

SOUTH BEND INTL (SBN)

RNP APCH.

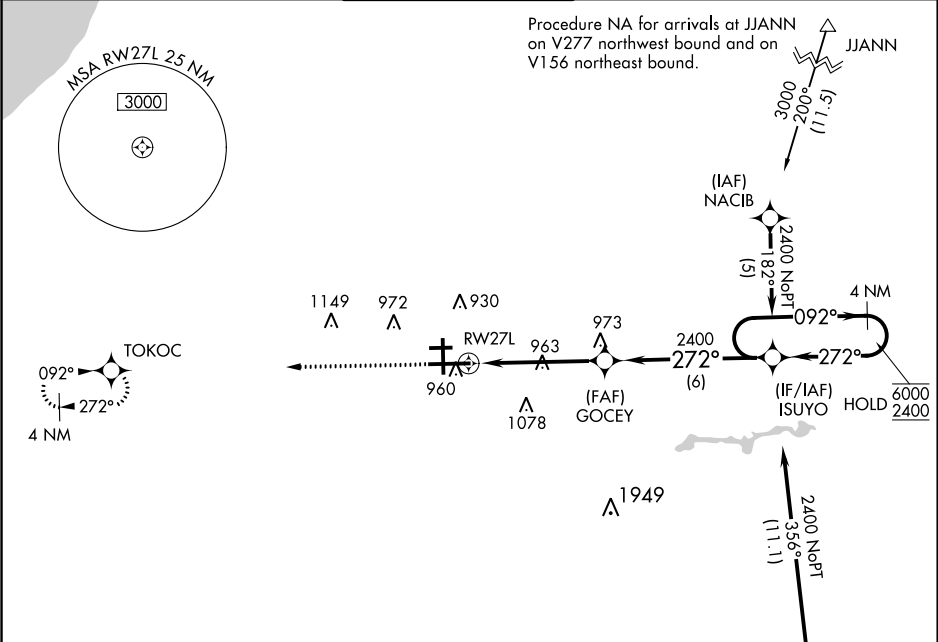
▼

For uncompensated Baro-VNAV systems, LNAV/VNAV NA below -19°C or above 54°C. For inop ALS, increase LNAV Cat C/D visibility to 1½ SM.

MALSR

MISSED APPROACH: Climb to 2600 direct TOKOC and hold.

ATIS <b>120.675</b>	SOUTH BEND APP CON ★ <b>118.55 257.8</b>	SOUTH BEND TOWER ★ <b>135.675 (CTAF) 257.8</b>	GND CON <b>121.7</b>	CLNC DEL <b>121.9</b>
------------------------	---	---	-------------------------	--------------------------



ELEV **798**

**D**

TDZE **774**

