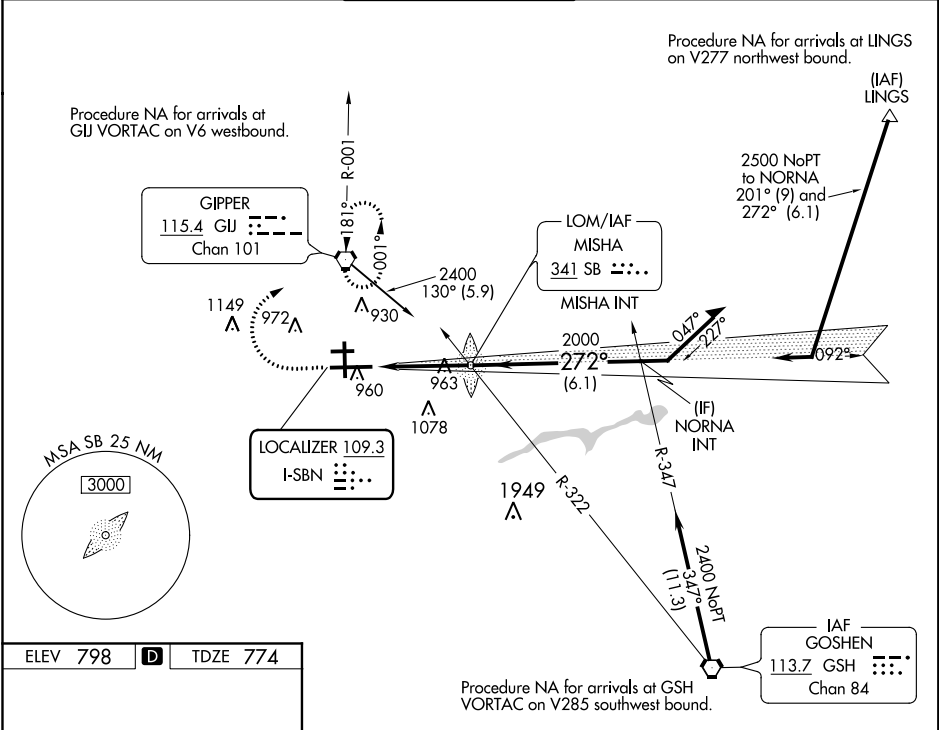


LOC I-SBN 109.3	APP CRS 272°	Rwy Idg TDZE 774 Apt Elev 798
---------------------------	------------------------	---

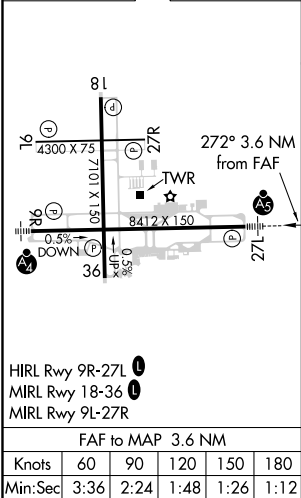
ILS or LOC RWY 27L
SOUTH BEND INTL (SBN)

<p>▼ *RVR 1800 authorized with the use of FD or AP ▲ or HUD to DA.</p>	<p>MALSR</p>	<p>MISSED APPROACH: Climb to 1200 then climbing right turn to 2400 direct GJ VORTAC and hold.</p>
--	--------------	---

ATIS 120.675	SOUTH BEND APP CON ★ 118.55 257.8	SOUTH BEND TOWER ★ 135.675 (CTAF) 257.8	GND CON 121.7	CLNC DEL 121.9
------------------------	---	---	-------------------------	--------------------------



ELEV 798	TDZE 774
----------	----------



<p>1200 2400 GJ</p>				
<p>MISHA LOM/INT</p>				
<p>Remain within 10 NM</p>				
<p>1972 NORNIA INT</p>				
<p>272°-2400</p>				
<p>2400</p>				
<p>2000</p>				
<p>3.6 NM 6.1 NM</p>				
<p>GS 3.00° TCH 53</p>				
CATEGORY	A	B	C	D
S-ILS 27L *	974/24 200 (200-½)			
S-LOC 27L	1220/24	446 (500-½)	1220/45	446 (500-¾)
☐ CIRCLING	1280-1	482 (500-1)	1440-1¾ 642 (700-1¾)	1500-2¼ 702 (800-2¼)