

WAAS CH 86406 W23A	APP CRS 230°	Rwy Idg 10000 TDZE 790 Apt Elev 796
----------------------------------------	------------------------	----------------------------------------------------------------

RNAV (GPS) Y RWY 23L

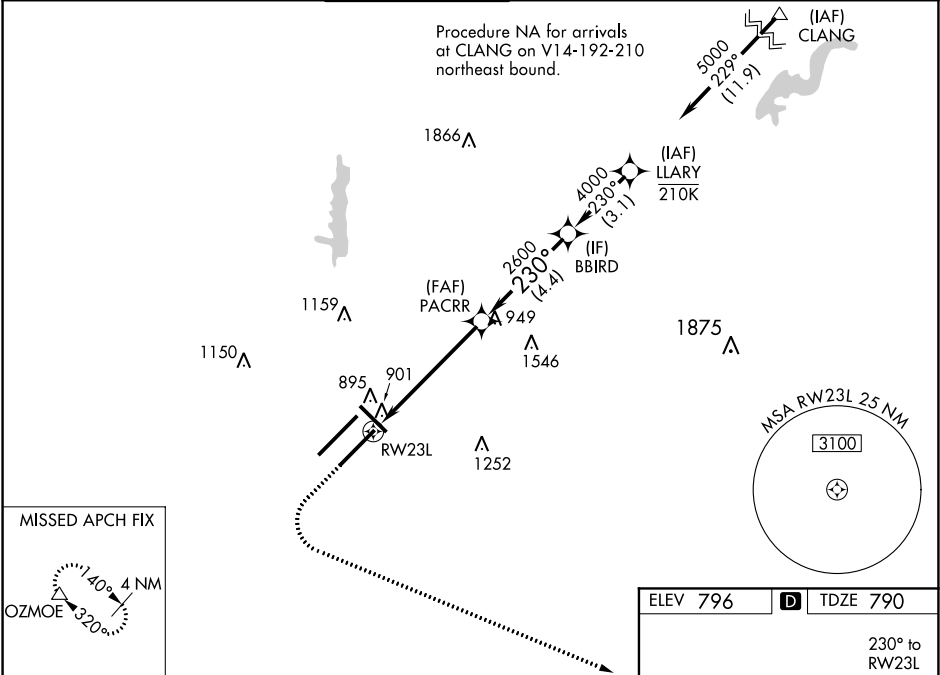
INDIANAPOLIS INTL (IND)

▼ For uncompensated Baro-VNAV systems, LNAV/VNAV NA below -18°C (0°F) or above 54°C (130°F). DME/DME RNP-0.3 NA. LNAV procedure NA during simultaneous operations. Use of FD or AP providing RNAV track guidance required during simultaneous operations. Simultaneous approach authorized. For inop MALSR, increase LNAV/VNAV all Cats visibility to RVR 4500; increase LNAV Cats C/D visibility to RVR 5500. **RVR 1800 authorized with use of FD or AP or HUD to DA.

MALSR

MISSED APPROACH: Climb to 1500 then climbing left turn to 3000 direct OZMOE and hold.

D-ATIS 134.25	INDIANAPOLIS APP CON 128.175 317.8	INDY TOWER 120.9 257.8	GND CON 121.9	CLNC DEL 128.75 257.8	CPDLC
-------------------------	----------------------------------------------	----------------------------------	-------------------------	---------------------------------	-------



1500	3000	OZMOE	VGSI and RNAV glidepath not coincident (VGSI Angle 3.00/TCH 75).							
* LNAV only.										
CATEGORY			A		B		C		D	
LPV DA			** 990/24 200 (200-½)							
LNAV/VNAV DA			1078/24 288 (300-½)							
LNAV MDA			1160/24 370 (400-½)				1160/35 370 (400-¾)			
CIRCLING			1420-1 624 (700-1)				1420-1¾ 624 (700-1¾)		1560-2½ 764 (800-2½)	

