

(ROCKY1.ROCKY) 18032
ROCKY ONE DEPARTURE

AL-203 (FAA)

INDIANAPOLIS INTL (IND)
INDIANAPOLIS, INDIANA

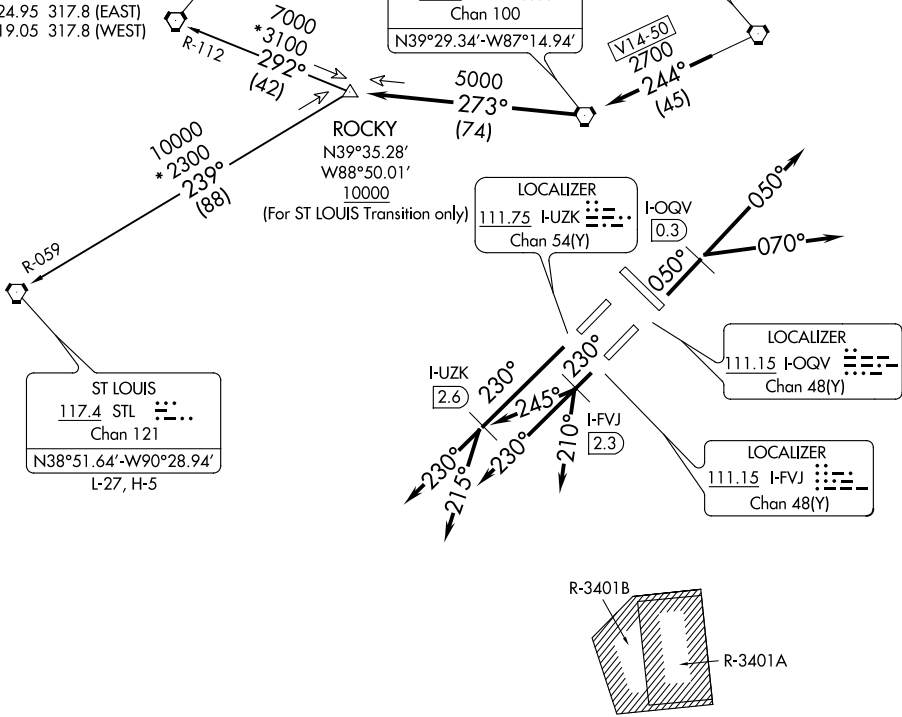
D-ATIS
134.25
CLNC DEL
128.75 257.8
CPDLC
GND CON
121.9
INDY TOWER
120.9 257.8
INDIANAPOLIS DEP CON
124.95 317.8 (EAST)
119.05 317.8 (WEST)

SPINNER
112.7 SPI
Chan 74
N39°50.38'-W89°40.66'
L-27, H-5

TERRE HAUTE
115.3 TTH
Chan 100
N39°29.34'-W87°14.94'

BRICKYARD
116.3 VHP
Chan 110

TOP ALTITUDE:
(JETS) 5000
(PROPS) 3000



TAKEOFF MINIMUMS

Rwys 5L/R, 14, 23L/R, 32: Standard.

- NOTE: RADAR required.
NOTE: Select appropriate localizer/DME frequency/channel prior to departure.
NOTE: Turbojets accelerate to 250K until reaching 10000, if unable advise ATC.
NOTE: Assigned to aircraft with a requested altitude of 11000 or above.

(NARRATIVE ON FOLLOWING PAGE)

NOTE: Chart not to scale.