

(INDY9.VHP) 20086
INDY NINE DEPARTURE

AL-203 (FAA)

INDIANAPOLIS INTL (IND)
INDIANAPOLIS, INDIANA

D-ATIS 134.25
CLNC DEL
128.75 257.8
CPDLC
GND CON
121.9
INDY TOWER
120.9 257.8
INDIANAPOLIS DEP CON
124.95 317.8 (EAST)
119.05 317.8 (WEST)

**TOP ALTITUDE:
(JETS) 5000
(PROPS) 3000**

CHAMPAIGN
110.0 CMI
Chan 37
N40°02.07'-W88°16.56'
L-27

BOILER
115.1 BVT
Chan 98
N40°33.37'-W87°04.16'
L-27, H-5

MARION
108.6 MZZ
Chan 23
N40°29.60'-W85°40.76'
L-27, H-5-10

ROSEWOOD
117.5 ROD
Chan 122
N40°17.27'-W84°02.59'
L-27, H-10

KOKOMO
113.5 OKK
Chan 82
N40°31.67'-W86°03.48'
L-27, H-5-10

LOCALIZER
111.75 I-UZK
Chan 54(Y)

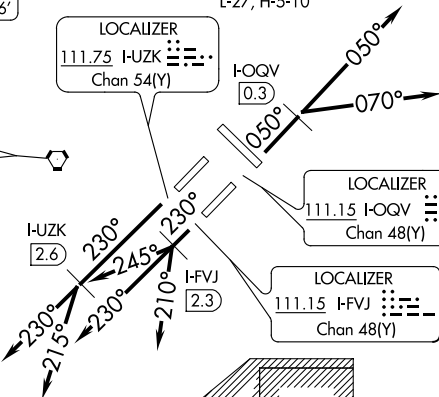
BRICKYARD
116.3 VHP
Chan 110
N39°48.88'-W86°22.05'
L-27, H-5-10

TERRE HAUTE
115.3 TTH
Chan 100
N39°29.34'-W87°14.94'
L-27, H-5

LOCALIZER
111.15 I-OQV
Chan 48(Y)

DAYTON
114.5 DGN
Chan 92
N40°00.99'-W84°23.81'
L-27, H-10

LOCALIZER
111.15 I-FVJ
Chan 48(Y)



R-3401B

R-3401A

SHELBYVILLE
112.0 SHB
Chan 57
N39°37.95'-W85°49.46'
L-27, H-5-10

HOOSIER
110.2 OOM
Chan 39
N39°08.63'-W86°36.78'
L-27

R-3403B

R-3403A

CINCINNATI
117.3 CVG
Chan 120
N39°00.96'-W84°42.20'
L-26-27

POCKET CITY
113.3 PXV
Chan 80
N37°55.70'-W87°45.74'
L-16, H-5

TAKEOFF MINIMUMS:

Rwys 5L/R, 14, 23L/R, 32: Standard.

NOTE: RADAR required.

NOTE: Select appropriate localizer/DME frequency/channel prior to departure.

NOTE: Jet aircraft accelerate to 250K until reaching 10000. If unable advise ATC.

(NARRATIVE ON FOLLOWING PAGE)

NOTE: Chart not to scale.