

LOC I-TOL <u>109.7</u>	APCH CRS 072°	Rwy Idg 10,599 TDZE 683 Arpt Elev 683
----------------------------------	-------------------------	--

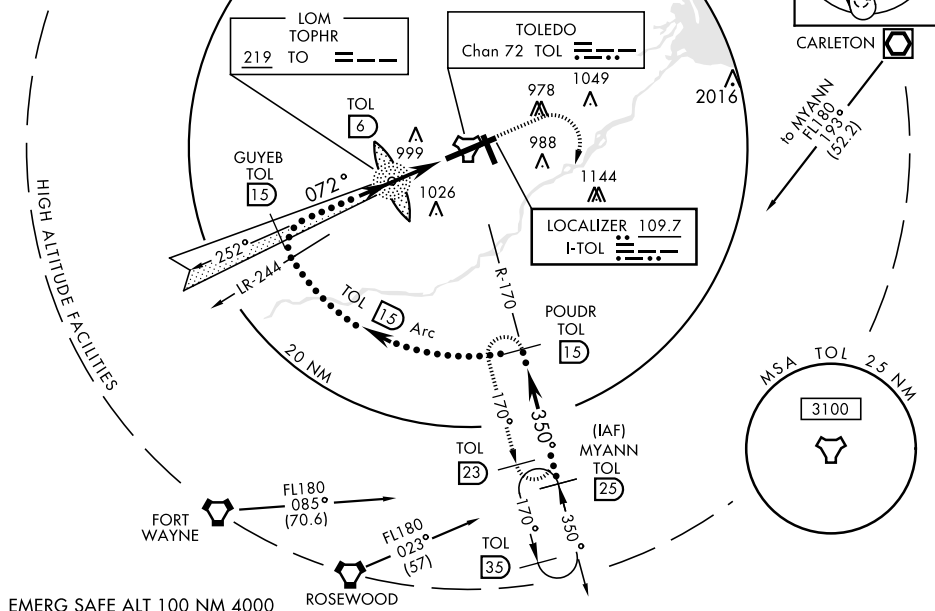
EUGENE F KRANZ TOLEDO EXPRESS (KTOL)

ALSF-2

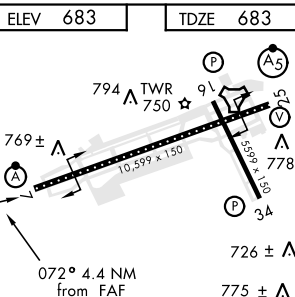
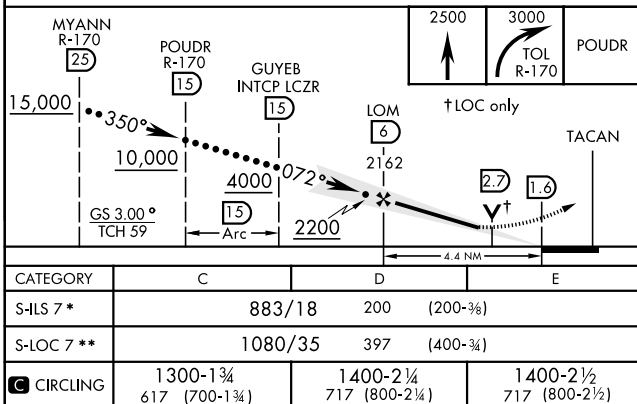
MISSED APPROACH: Climb to 2500, then climbing right turn to 3000 via TOL R-170 to POUDR and hold.

ASR

Procedure NA for arrival at
ROD VORTAC on V47
southwest bound.



EMERG SAFE ALT 100 NM 4000



HIRL Rwy 7-25
MIRL Rwy 16-34
REIL Rwy 16-34
TDZL/CL Rwy 7

EUGENE F KRANZ TOLEDO EXPRESS (KTOL)

Amdt 8B 13AUG20

HI-ILS Y or LOC Y RWY 7