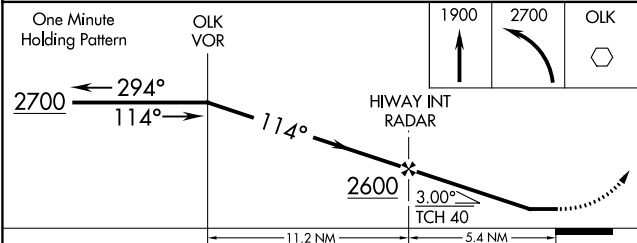
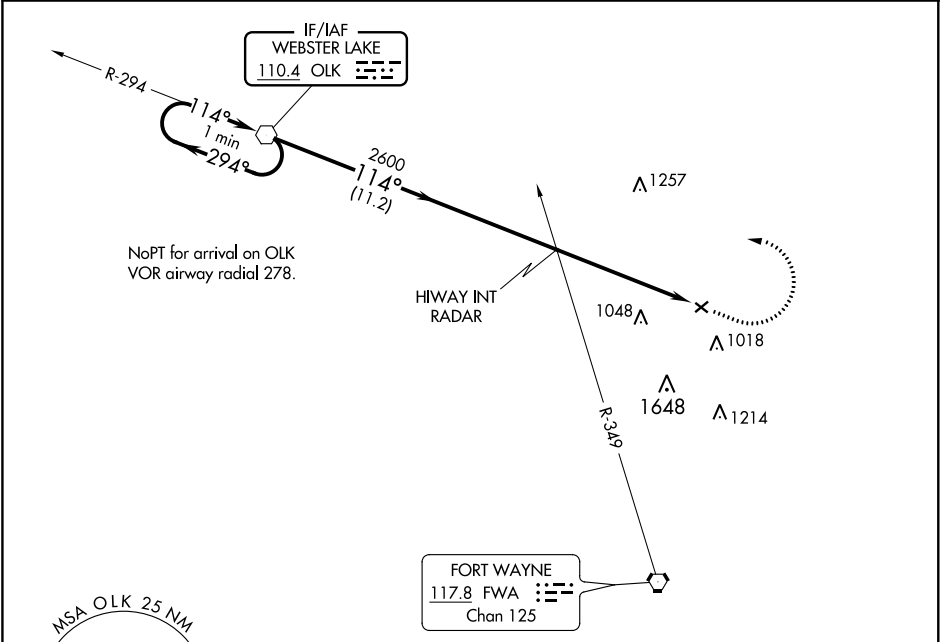


VOR OLK <b>110.4</b>	APP CRS <b>114°</b>	Rwy Idg TDZE Apt Elev	<b>2623</b> <b>836</b> <b>836</b>
-------------------------	------------------------	-----------------------------	---

VOR RWY 13  
SMITH FIELD (SMD)

<b>⚠</b> NA <b>⚠</b> -22°C	Rwy 13 helicopter visibility reduction below 1 SM NA. Procedure NA at night. When local altimeter setting not received, use Fort Wayne Intl altimeter setting and increase all MDA 40 feet and S-13 Cat C visibility 1/8 SM.	MISSED APPROACH: Climb to 1900 then climbing left turn to 2700 direct OLK VOR and hold.
-------------------------------	--	---

AWOS-3 <b>124.55</b>	FORT WAYNE APP CON <b>127.2 284.6</b>	UNICOM <b>122.8 (CTAF) 0</b>
-------------------------	--	---------------------------------



CATEGORY	A	B	C	D
S-13	1360-1 524 (600-1)	1360-1 524 (600-1 1/2)	1360-1 524 (600-1 1/2)	NA
<b>C</b> CIRCLING	1400-1 564 (600-1)	1400-1 564 (600-1)	1940-3 1104 (1200-3)	NA

