

APP CRS
056°

Rwy Idg
TDZE
834

3035
Apt Elev
836

RNAV (GPS) RWY 5

SMITH FIELD (SMD)

RNP APCH.

▼
▲
❄

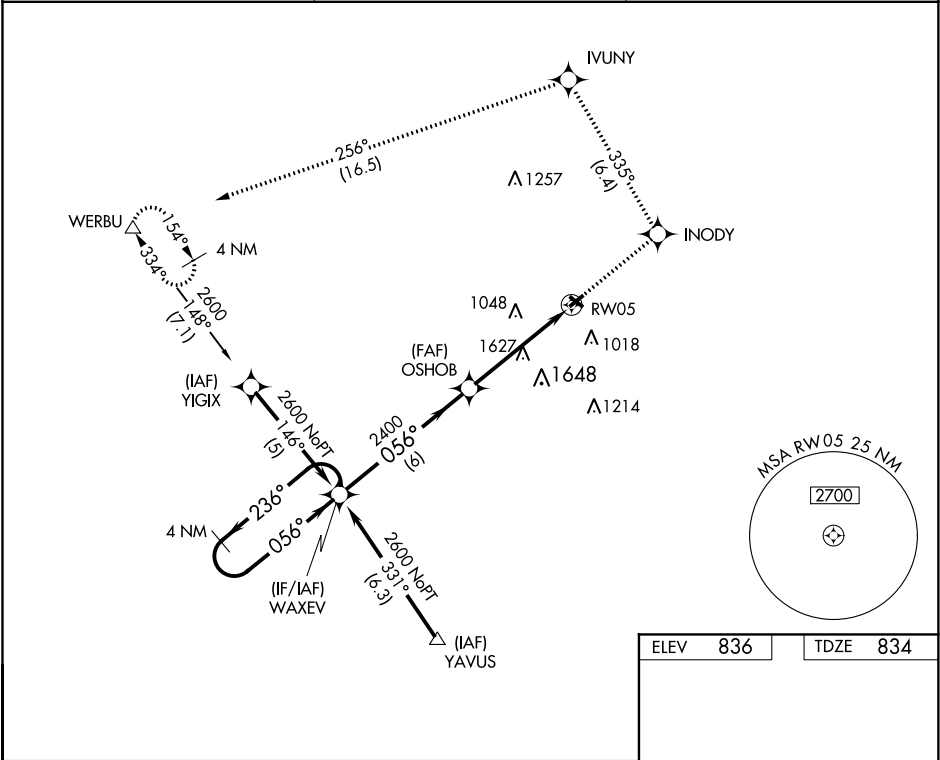
When local altimeter setting not received, use Fort Wayne Intl altimeter setting and increase all MDA 40 feet. Procedure NA at night. Rwy 5 helicopter visibility reduction below 1 SM NA.

MISSED APPROACH: Climb to 2700 direct INODY and on track 335° to IVUNY and on track 256° to WERBU and hold.

AWOS-3
124.55

FORT WAYNE APP CON
127.2 284.6

UNICOM
122.8 (CTAF) 0



4 NM Holding Pattern

2700 INODY

tr 335° IVUNY

tr 256° WERBU

WAXEV

Visual Segment - Obstacles.

2600 ← 236°

→ 056°

056°

OSHOB

2400

RW05

6 NM

4.8 NM

CATEGORY	A	B	C	D
LNNAV MDA	1880-1¼ 1046 (1100-1¼)	1880-1½ 1046 (1100-1½)	1880-3 1046 (1100-3)	NA
CIRCLING	1880-1¼ 1044 (1100-1¼)	1880-1½ 1044 (1100-1½)	1940-3 1104 (1200-3)	NA

MIRL Rwy 5-23 and 13-31 0