

WAAS CH <b>65738</b> <b>W23A</b>	APP CRS <b>236°</b>	Rwy Idg <b>3035</b> TDZE <b>834</b> Apt Elev <b>836</b>
--	------------------------	---

RNAV (GPS) RWY 23  
SMITH FIELD (SMD)

RNP APCH.

**T**

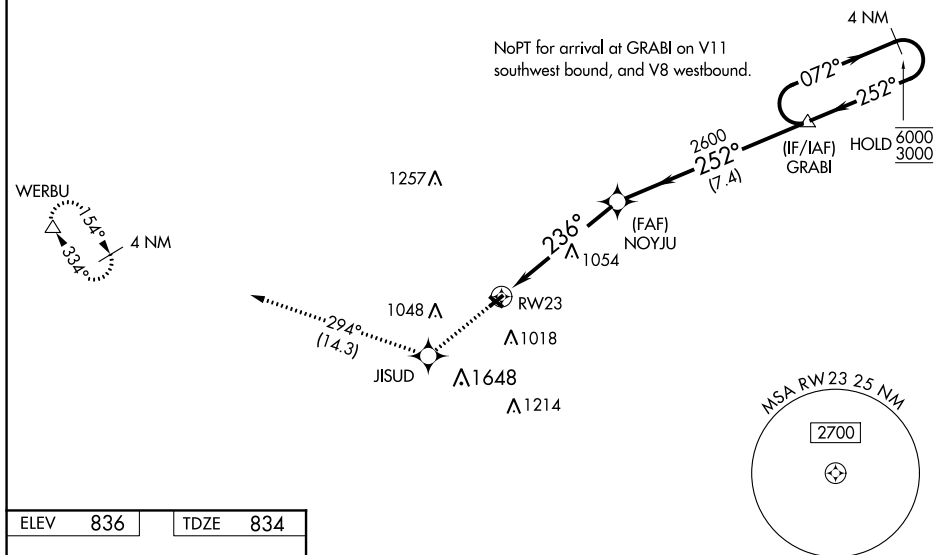
**A NA**

 -22°C

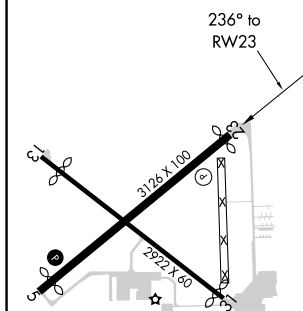
Procedure NA at night. Rwy 23 helicopter visibility reduction below 1 SM NA. When local altimeter setting not received, use Fort Wayne Intl altimeter setting and increase all MDA 40 feet and LP and LNAV Cat C visibility  $\frac{1}{8}$  SM.

**MISSED APPROACH:** Climb to 2700 direct JISUD and on track 294° to WERBU and hold.

AWOS-3 <b>124.55</b>	FORT WAYNE APP CON <b>127.2 284.6</b>	UNICOM <b>122.8 (CTAF) 0</b>
-------------------------	--	---------------------------------



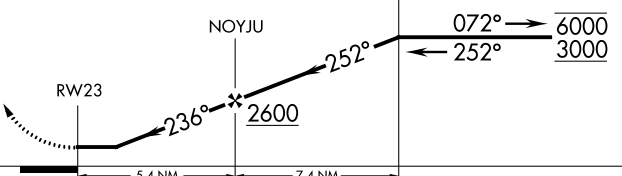
ELEV	836		TDZE	834
------	-----	--	------	-----

MIRL Rwyys 5-23 and 13-31 **L**

FORT WAYNE, INDIANA

Amdt 1A 20JUN19

2700 ↑	JISUD ✦	tr 294°	WERBU △	Visual Segment - Obstacles.  GRAB1	4 NM Holding Pattern
-----------	------------	------------	------------	--	-------------------------



CATEGORY	A	B	C	D
LP MDA	1360-1 526 (600-1)		1360-1 $\frac{1}{2}$ 526 (600-1 $\frac{1}{2}$ )	NA
LNAV MDA	1400-1 566 (600-1)		1400-1 $\frac{1}{2}$ 566 (600-1 $\frac{1}{2}$ )	NA
<b>C</b> CIRCLING	1400-1 564 (600-1)		1940-3 1104 (1200-3)	NA

FORT WAYNE, INDIANA

Amdt 1A 20JUN19

41°09'N-85°09'W

SMITH FIELD (SMD)  
RNAV (GPS) RWY 23