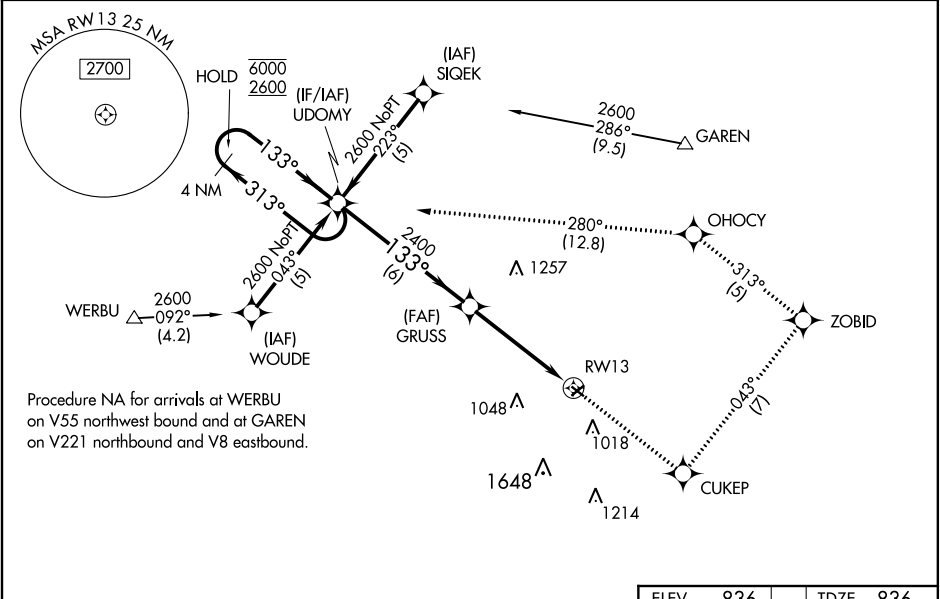


WAAS CH <b>69220</b> <b>W13A</b>	APP CRS <b>133°</b>	Rwy Idg TDZE <b>836</b> Apt Elev <b>836</b>
--	------------------------	---

RNAV (GPS) RWY 13

SMITH FIELD (SMD)

RNP APCH. ▼ ▲ NA ❄ -22°C Procedure NA at night. Rwy 13 helicopter visibility reduction below 1 SM NA. For uncompensated Baro-VNAV systems, LNAV/VNAV NA below -16°C or above 54°C. When local altimeter setting not received, use Fort Wayne Intl altimeter setting: increase LPV DA to 1162 feet; LNAV/VNAV DA to 1435 feet; increase all MDA 40 feet and LNAV Cat C visibility ¼ SM. Baro-VNAV NA when using Fort Wayne Intl altimeter setting.		MISSED APPROACH: Climb to 2600 direct CUKEP and on track 043° to ZOBID and on track 313° to OHOCY and on track 280° to UDOMY and hold.
AWOS-3 <b>124.55</b>	FORT WAYNE APP CON <b>127.2 284.6</b>	UNICOM <b>122.8 (CTAF) 0</b>



4 NM Holding Pattern		UDOMY	GRUSS	RW13
6000 2600		313°	2400	
GP 3.00° TCH 40		133°		
		6 NM	4.7 NM	
CATEGORY	A	B	C	D
LPV DA	1135-1	299 (300-1)		NA
LNAV/VNAV DA	1408-2	572 (600-2)		NA
LNAV MDA	1340-1	504 (600-1)	1340-1½ 504 (600-1½)	NA
❏ CIRCLING	1400-1	564 (600-1)	1940-3 1104 (1200-3)	NA

ELEV 836	TDZE 836
----------	----------

133° to RWY 13

MIRL Rwy 5-23 and 13-31 0