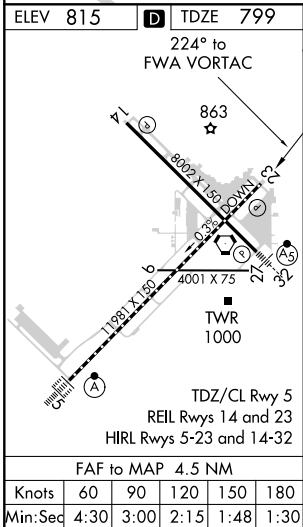
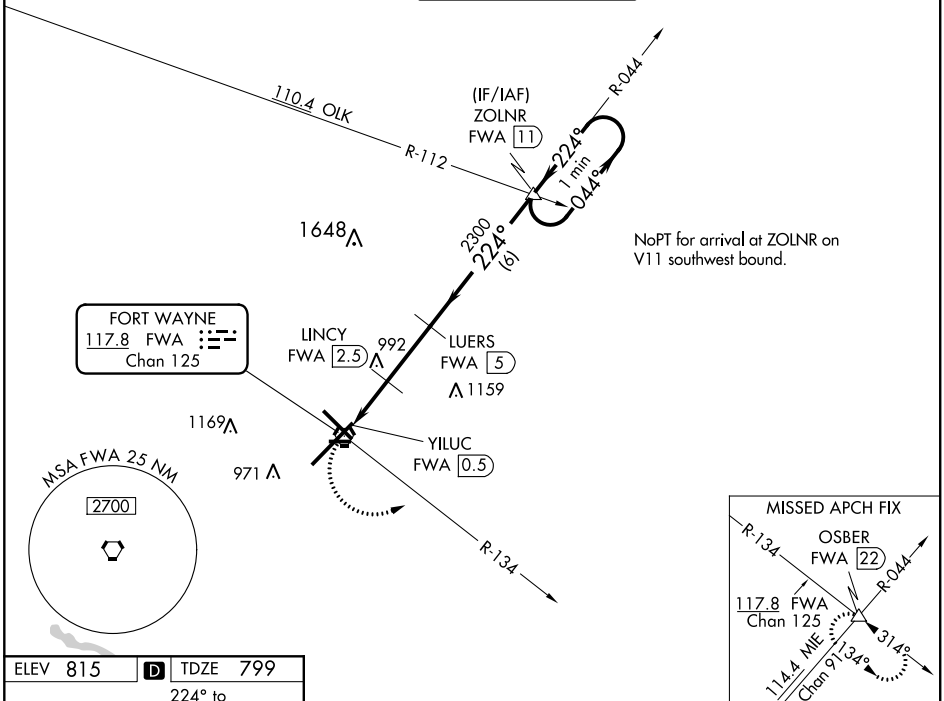



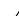

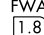






VORTAC FWA	APP CRS	Rwy Idg	11981
117.8	224°	TDZE	799
Chan 125		Apt Elev	815

VOR or TACAN RWY 23

FORT WAYNE INTL (FWA)

<div><div><div>V</div><div>ASR</div></div></div>		MISSED APPROACH: Climbing left turn to 3000 on FWA VORTAC R-134 to OSBER INT/FWA 22 DME and hold.		
ATIS	FORT WAYNE APP CON	FORT WAYNE TOWER	GND CON	CLNC DEL
121.25 360.825	127.2 284.6	119.1 269.325	121.9 348.6	124.75



<div>3000</div> <div>FAW R-134</div> <div>OSBER</div> <div></div>		<div>LUERS</div> <div>FWA <span>5</span></div>		<div>ZOLNR</div> <div>FWA <span>11</span></div> <div>One Minute Holding Pattern</div>	
<div>YILUC FWA <span>0.5</span></div> <div>FAW <span>1.8</span></div> <div>LINCYN FWA <span>2.5</span></div>		<div>2300</div> <div>1400</div>		<div>044° → 3000</div> <div>← 224°</div> <div>VGSI and descent angles not coincident (VGSI Angle 3.00/TCH 76).</div>	
<div>3.04° TCH 55</div>		<div>224°</div>			
<div>1.3</div>		<div>0.7 NM</div>	<div>2.5</div>	<div>6 NM</div>	
CATEGORY	A	B	C	D	E
S-23	1400/55 601 (600-1)		1400-1¾ 601 (600-1¾)		
 CIRCLING	1400-1	585 (600-1)	1420-1¾ 605 (700-1¾)	1520-2¼ 705 (800-2¼)	1520-2½ 705 (800-2½)
LINCYN FIX MINIMUMS					
S-23	1300/55 501 (500-1)		1300-1⅜ 501 (500-1⅜)		
 CIRCLING	1300-1	485 (500-1)	1420-1¾ 605 (700-1¾)	1520-2¼ 705 (800-2¼)	1520-2½ 705 (800-2½)