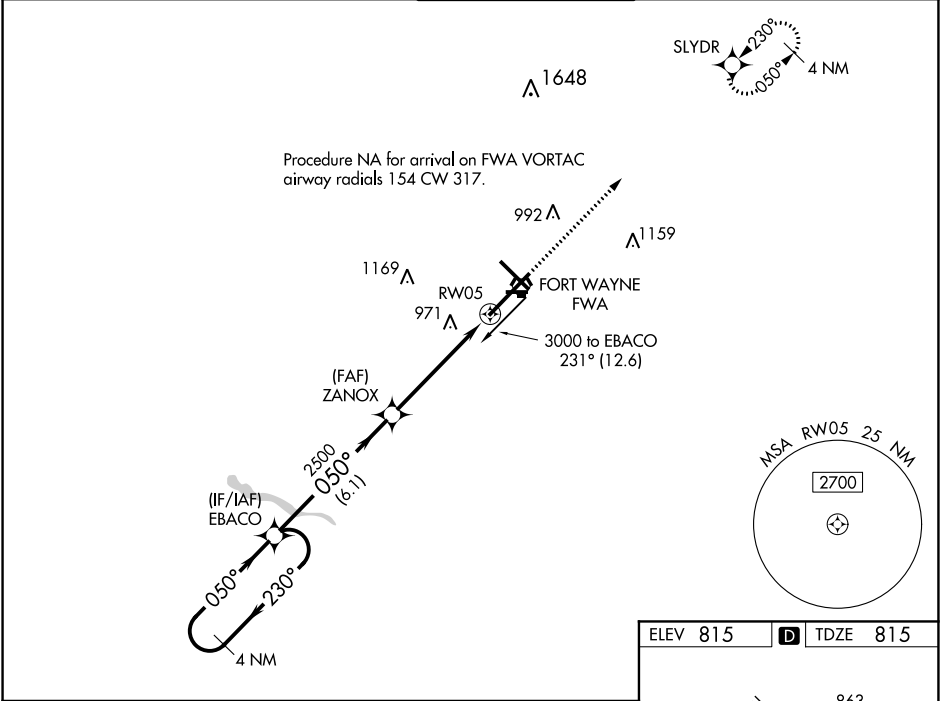


WAAS CH 93609 W05A	APP CRS 050°	Rwy Idg 11981 TDZE 815 Apt Elev 815
--	------------------------	--

RNAV (GPS) RWY 5

FORT WAYNE INTL (FWA)

<div><div>▼ ASR</div><div>For uncompensated Baro-VNAV systems, procedure NA below -16°C (4°F) or above 47°C (116°F). DME/DME RNP-0.3 NA. For inop ALS, increase LPV Cat E visibility to RVR 4000, LNAV/VNAV all Cats visibility to 1½ SM and LNAV Cat C/D/E visibility to 1¾ SM.</div></div>	<div>ALSF-2</div> <div><div><div>ⓘ</div><div>ⓐ</div></div><div><div>ⓐ</div><div>ⓑ</div></div></div>	<div>MISSED APPROACH:</div> <div>Climb to 3000 direct SLYDR and hold.</div>	<div>ATIS</div> <div>121.25 360.825</div>	<div>FORT WAYNE APP CON</div> <div>127.2 284.6</div>	<div>FORT WAYNE TOWER</div> <div>119.1 269.325</div>	<div>GND CON</div> <div>121.9 348.6</div>	<div>CLNC DEL</div> <div>124.75</div>
--	---	---	--	---	---	--	--



4 NM Holding Pattern				EBACO		ZANOX		3000 ↑		SLYDR ✦	
3000 ← 230° 050° →				050°		2500		* 1.4 NM to RW05		* LNAV only.	
GP 3.00° TCH 55											
				6.1 NM		3.7 NM		1.4 NM		RW05	
CATEGORY	A		B		C		D		E		
LPV DA					1065/18		250 (300-½)				
LNAV/VNAV DA					1275/60		460 (500-¼)				
LNAV MDA	1300/24		485 (500-½)				1300/50		485 (500-1)		
CIRCLING	1300-1		485 (500-1)		1420-1¾ 605 (700-1¾)		1520-2¼ 705 (800-2¼)		1520-2½ 705 (800-2½)		

