

DAYTON, OHIO

ILS or LOC RWY 5L

LOC I-FAE <u>109.7</u>	APCH CRS 053°	Rwy Idg 12,600 TDZE 803 Arpt Elev 823
----------------------------------	-------------------------	--

AL-108 [USAF]

WRIGHT-PATTERSON AFB (KFFO)

T * When ALS inop, increase RVR to 40 and vis to $\frac{3}{4}$ mile.
 ** When ALS inop, increase CAT AB RVR to 55 and vis to 1 mile, CAT CDE vis to $1\frac{3}{8}$ miles.

ALSF-1

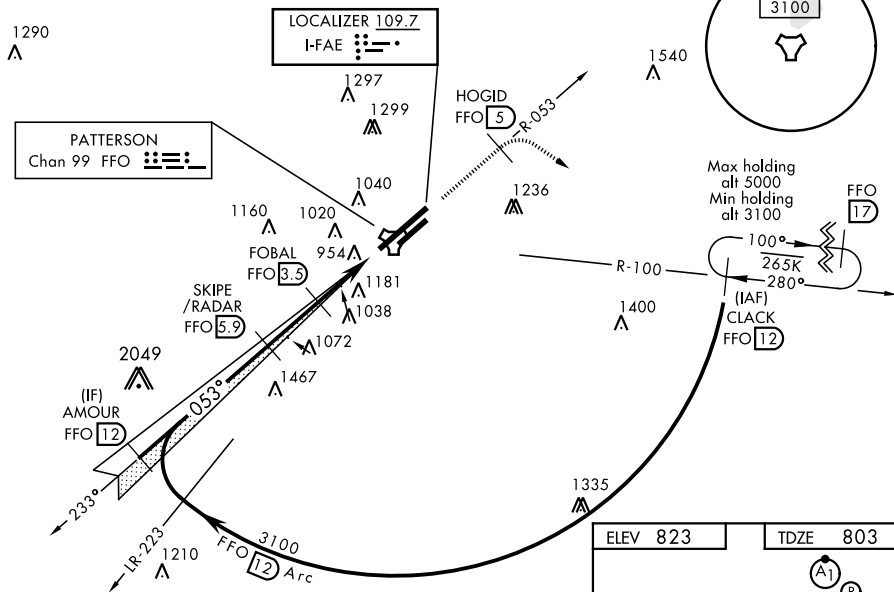
† MISSED APPROACH: Climb to 2000 via FFO R-053 at 5 DME, turn right direct CLACK climbing to 3100 and hold.

ATIS 124.475 269.9	COLUMBUS APP CON 118.85 269.275	PATTERSON TOWER 126.9 281.45	GND CON 121.8 335.8
-----------------------	------------------------------------	---------------------------------	------------------------

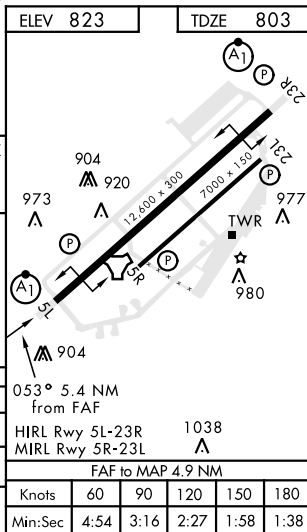
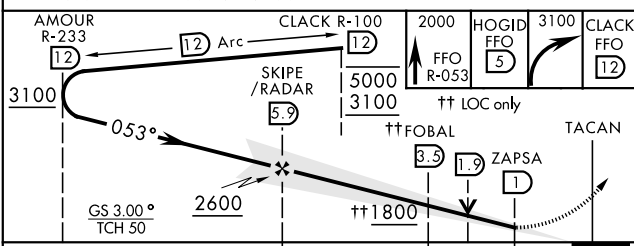
*** When Rwy 23R VGSi inop,
circling to Rwy 23R NA at night.

† Missed approach requires use of RNAV or ATC radar monitoring.

DME or RADAR REQUIRED
FOR LOCALIZER



EMERG SAFE ALT 100 NM 3700



CATEGORY	A	B	C	D	E
S-ILS 5L *	1003/24		200	(200-½)	
S-LOC 5L **	1280/24 476 (500-½)		1280/50 476 (500-1)		
C CIRCLING ***	1380-1 557 (600-1)	1440-1 617 (700-1)	1560-2 737 (800-2)	1620-2½ 797 (800-2½)	1620-2¾ 797 (800-2¾)

DAYTON, OHIO

39° 50' N-84° 03' W

WRIGHT-PATTERSON AFB (KFFO)

ILS or LOC RWY 5L