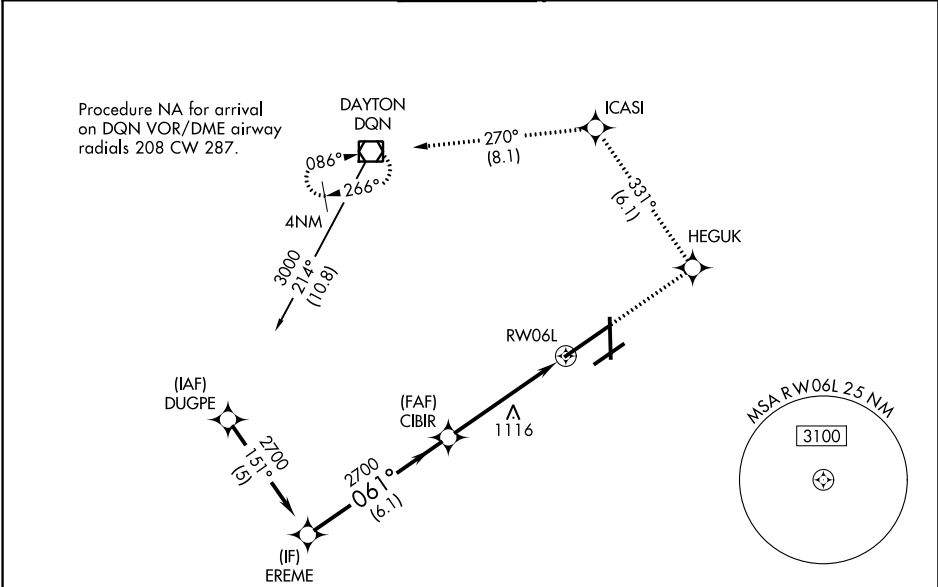


WAAS CH <b>42913</b> <b>W06A</b>	APP CRS <b>061°</b>	Rwy Idg <b>10900</b> TDZE <b>998</b> Apt Elev <b>1009</b>
--	------------------------	---

RNAV (GPS) Z RWY 6L

JAMES M COX DAYTON INTL (DAY)

RNP APCH		ALSf-2	MISSED APPROACH: Climb to 3000 direct HEGUK and on track 331° to ICASI and on track 270° to DQN VOR/DME and hold.	
ATIS <b>125.8</b>	COLUMBUS APP CON <b>118.425 323.15</b>	DAYTON TOWER <b>119.9 257.7</b>	GND CON <b>121.9</b>	CLNC DEL <b>121.75</b>



VGSI and RNAV glidepath not coincident (VGSI Angle 3.00/TCH 67).					ELEV 1009		TDZE 998									
					3000		HEGUK		tr 331°		ICASI		tr 270°		DQN	
*LNAV only.																
CATEGORY					A		B		C		D					
LPV DA					1198/18		200 (200-½)									
LNAV/ VNAV DA					1366/40		368 (400-¾)									
LNAV MDA					1420/24		422 (500-½)		1420/40 422 (500-¾)		1420/50 422 (500-1)					
CIRCLING					1580-1		571 (600-1)		1580-1½ 571 (600-1½)		1640-2 631 (700-2)					

Diagram showing the airport layout with various taxiways and runways. It includes altitudes for TWR (1260) and other points.

061° to RW06L

HIRL all Rwy  
TDZ/CL Rwy 6L  
REIL Rwy 6R and 36