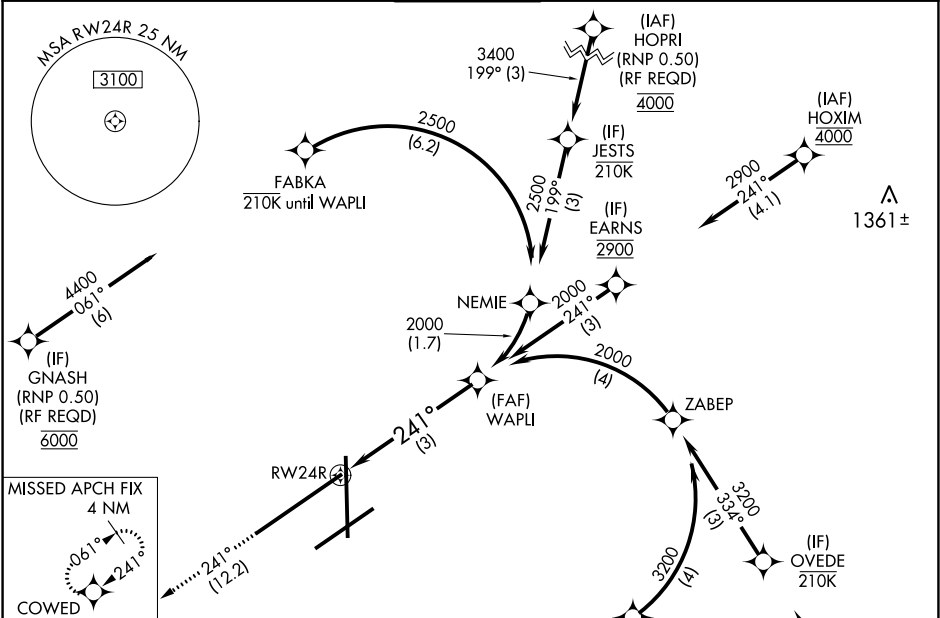


APP CRS	Rwy Idg	10900
241°	TDZE	997
	Apf Elev	1009

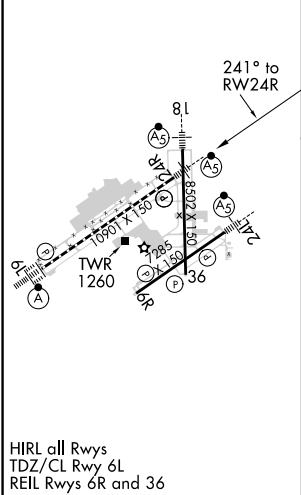
RNAV (RNP) Y RWY 24R
JAMES M COX DAYTON INTL (DAY)

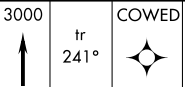

RNP AR APCH.	MALSR	MISSED APPROACH: Climb to 3000 on track 241° COWED and hold.
▼ For inop ALS, increase RNP 0.10 all Cats visibility to RVR 5500 and RNP 0.30 all Cats visibility to 1 3⁄8 SM. For uncompensated Baro-VNAV systems, procedure NA below -19°C or above 54°C.	AS	

ATIS 125.8	COLUMBUS APP CON 118.425 323.15	DAYTON TOWER 119.9 257.7	GND CON 121.9	CLNC DEL 121.75
---------------	------------------------------------	-----------------------------	------------------	--------------------



ELEV 1009	D	TDZE 997
-----------	---	----------



3000	tr 241°	COWED	See planview for multiple IF locations.			
						
			3 NM			
CATEGORY	A		B	C	D	
RNP 0.10 DA			1334/35	337 (400-%)		
RNP 0.30 DA			1418/50	421 (500-1)		
AUTHORIZATION REQUIRED						