
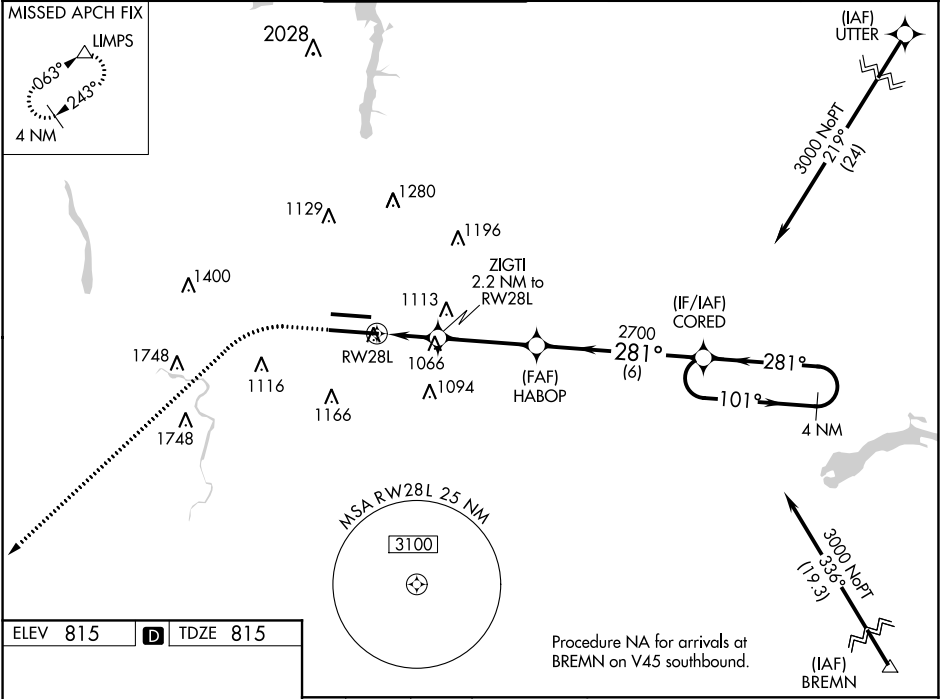


WAAS CH <b>48999</b> <b>W28A</b>	APP CRS <b>281°</b>	Rwy Idg TDZE Apt Elev	<b>10113</b> <b>815</b> <b>815</b>
--	------------------------	-----------------------------	--

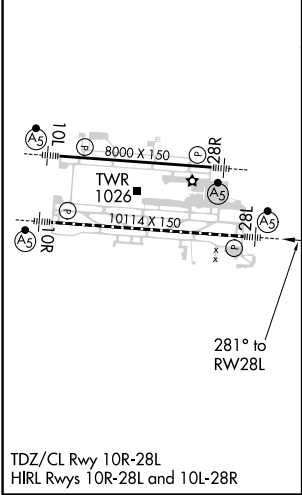
RNAV (GPS) Y RWY 28L  
JOHN GLENN COLUMBUS INTL (CMH)

<p>▼ For uncompensated Baro-VNAV systems, LNAV/VNAV NA below -18°C (0°F) or above 54°C (130°F). Simultaneous approach authorized. DME/DME RNP-0.3 NA. LNAV procedure NA during simultaneous operations. Use of FD or AP providing RNAV track guidance required during simultaneous operations.</p>	<p>MALSR</p> 	<p>MISSED APPROACH: Climb to 1400 then climbing left turn to 3000 direct LUMPS and hold.</p>
--	--	--

D-ATIS <b>124.6</b>	COLUMBUS APP CON <b>125.95 371.975</b>	COLUMBUS TOWER <b>132.7 257.8</b>	GND CON <b>121.9 348.6</b>	CLNC DEL <b>126.3</b>	CPDLC
------------------------	---	--------------------------------------	-------------------------------	--------------------------	-------



ELEV 815	<b>D</b>	TDZE 815
----------	----------	----------



1400	3000	LUMPS	VGSI and RNAV glidepath not coincident (VGSI Angle 3.00/TCH 68).	4 NM Holding Pattern
*LNAV only.		ZIGTI 2.2 NM to RW28L	HABOP	CORED
RW28L		*1.4 NM to RW28L	*1560	101°
1.4		0.8	3.6 NM	6 NM
CATEGORY	A	B	C	D
LPV DA	1015/18 200 (200-½)			
LNAV/VNAV DA	1261/55 446 (500-1)			
LNAV MDA	1320/24 505 (600-½)		1320/55 505 (600-1)	
CIRCLING	1340-1 525 (600-1)		1520-2 705 (800-2) 1540-2¾ 725 (800-2¾)	