


APP CRS	Rwy Idg	10113
281°	TDZE	815
	Apt Elev	815

RNAV (RNP) Z RWY 28L
JOHN GLENN COLUMBUS INTL (CMH)

T

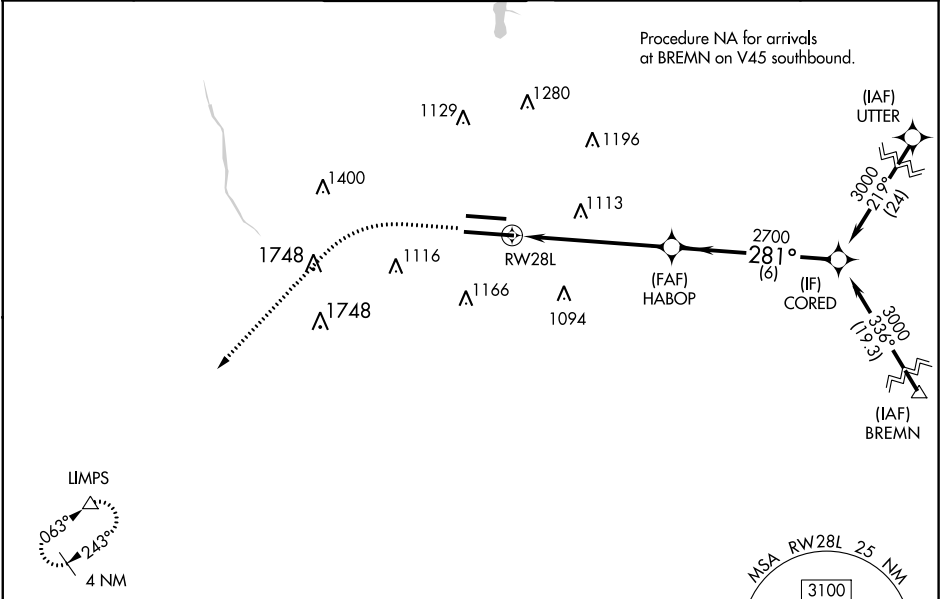
For uncompensated Baro-VNAV systems, procedure NA below -18°C (0°F) or above 54°C (130°F). GPS required. For inoperative ALS, increase RNP 0.17 all Cats visibility to RVR 4600, increase RNP 0.30 all Cats visibility to 1½ SM. Simultaneous approach authorized. Use of FD or AP providing RNAV track guidance required during simultaneous operations.

MALSR

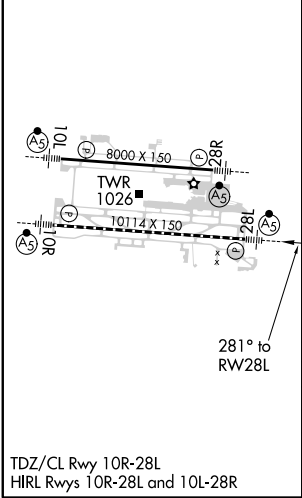


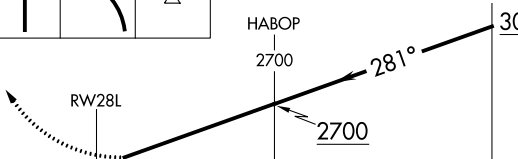
MISSED APPROACH:
Climb to 1400 then climbing left turn to 3000 direct LIMPS and hold.

D-ATIS 124.6	COLUMBUS APP CON 125.95 371.975	COLUMBUS TOWER 132.7 257.8	GND CON 121.9 348.6	CLNC DEL 126.3	CPDLC
-----------------	------------------------------------	-------------------------------	------------------------	-------------------	-------



ELEV 815	D	TDZE 815
----------	----------	----------



1400	3000	LIMPS	VGSI and RNAV glidepath not coincident (VGSI Angle 3.00°/ TCH 68).	CORED
				
RWY 28L		HABOP	2700	3000
5.8 NM		6 NM		
CATEGORY	A	B	C	D
RNP 0.17 DA	1105/40 290 (300-¾)			
RNP 0.30 DA	1295/60 480 (500-1¼)			

AUTHORIZATION REQUIRED