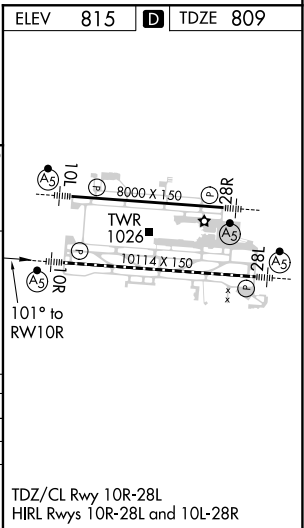
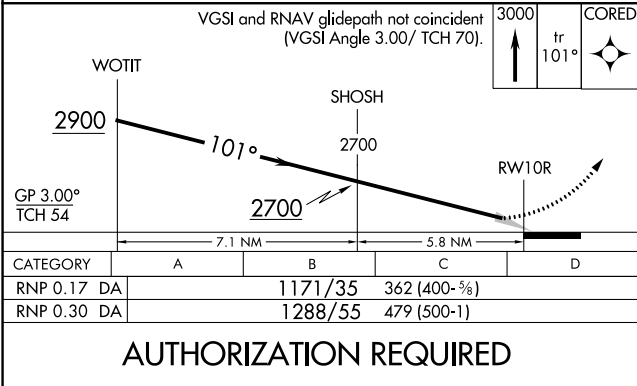
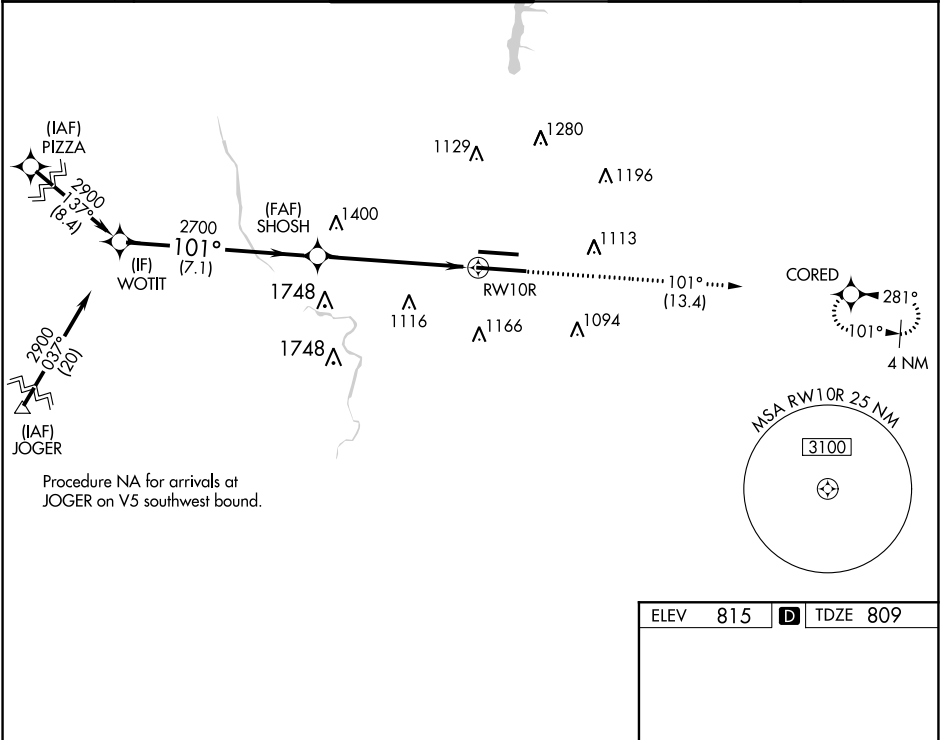


APP CRS	Rwy Idg	10113
101°	TDZE	809
	Apt Elev	815

RNAV (RNP) Z RWY 10R  
JOHN GLENN COLUMBUS INTL (CMH)

RNP AR APCH.					<div>MALSR</div> <div></div>	MISSED APPROACH: Climb to 3000 on track 101° to CORED and hold.	
<div><div>T</div><div>Simultaneous approach authorized. For uncompensated Baro-VNAV systems, procedure NA below -18°C or above 54°C. For inoperative ALS, increase RNP 0.17 all Cats visibility to RVR 5900, increase RNP 0.30 all Cats visibility to 1% SM.</div></div>							
D-ATIS 124.6	COLUMBUS APP CON 125.95 371.975		COLUMBUS TOWER 132.7 257.8	GND CON 121.9 348.6		CLNC DEL 126.3	CPDLC



EC-2, 03 DEC 2020 to 31 DEC 2020

EC-2, 03 DEC 2020 to 31 DEC 2020