

APP CRS <b>238°</b>	Rwy Idg TDZE Apt Elev	<b>9956</b> <b>786</b> <b>799</b>
------------------------	-----------------------------	---

## RNAV (RNP) Z RWY 24L

CLEVELAND-HOPKINS INTL (CLE)

RNP AR APCH.

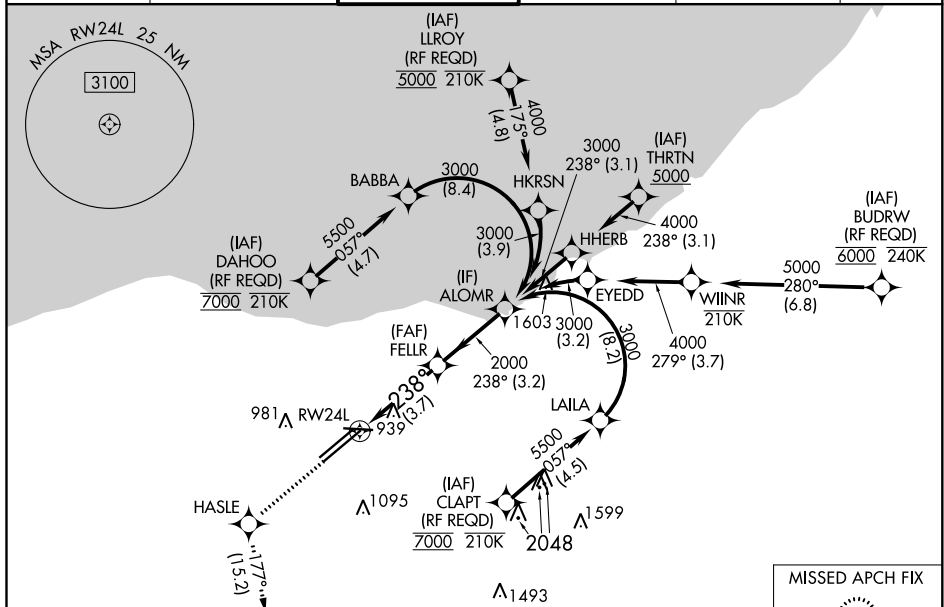
**T** For uncompensated Baro-VNAV systems, procedure NA below -18°C (0°F) or above 54°C (130°F). For inop ALS, increase RNP 0.19 all Cats visibility to RVR 5500.

MALSR

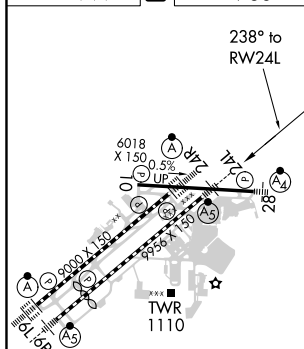


**MISSED APPROACH:** Climb to 3000 direct HASLE and on track 177° to SAROW and hold.

D-ATIS	CLEVELAND APP CON	CLEVELAND TOWER	GND CON	CLNC DEL	CPDLC
ARR 127.85	124.0 346.325	124.5 273.45	121.7 273.45	125.05 273.45	
DEP 132.375					



ELEV	799	<b>D</b>	TDZE	786
------	-----	----------	------	-----



REIL Rwy 10  
TDZ/CL Rwy 6L, 6R, 24L and 24R  
HIRL Rwy 6L-24R, 6R-24L and 10-28

CLEVELAND, OHIO  
Orig 24MAY18

1561 $\Delta$			
3000 ↑	HASLE ✦	SAROW △	VGSI and RNAV glidepath not coincident (VGSI Angle 3.00/TCH 48).
CATEGORY	A	B	C
RNP 0.19 DA	1140/30 354 (400-⅔)		
RNP 0.30 DA	1243/45 457 (500-⅔)		
AUTHORIZATION REQUIRED			

# AUTHORIZATION REQUIRED

41°25'N-81°51'W

CLEVELAND-HOPKINS INTL (CLE)  
RNAV (RNP) Z RWY 24L