

LOC/DME I-CLE	APP CRS	Rwy Idg	6R	6L
<b>111.9</b>	<b>058°</b>	TDZE	<b>8029</b>	<b>9000</b>
Chan <b>56</b>		Apt Elev	<b>779</b>	<b>779</b>

ILS or LOC RWY 6R  
CLEVELAND-HOPKINS INTL (CLE)

From GROHL, HICKR, and RUHSH: RNAV 1-DME/DME/IRU or GPS required for procedure entry. Aircraft not DME/DME/IRU or GPS equipped - RADAR required for procedure entry. RNAV 1.

DME required.

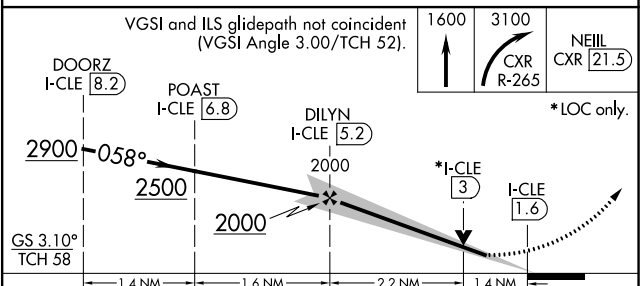
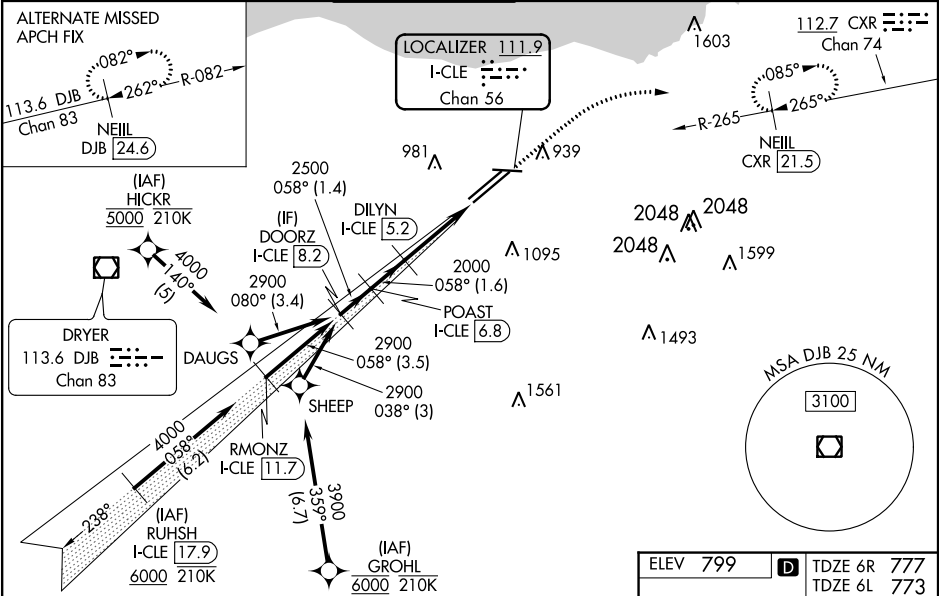
⚠ Circling Rwy 10 NA at night. Simultaneous approach authorized. Simultaneous operations require use of vertical guidance; maintain last assigned altitude until established on glideslope. Inop table does not apply to Sidestep 6L. For inop ALS, increase S-LOC 6R Cats C/D visibility to 1½ SM.

Rwy 6L  
ALS-F-2

Rwy 6R  
MALSR

MISSED APPROACH:  
Climb to 1600 then  
climbing right turn  
to 3100 on CXR  
VOR/DME R-265 to  
NEIL/CXR 21.5 DME  
and hold.

D-ATIS ARR <b>127.85</b> DEP <b>132.375</b>	CLEVELAND APP CON <b>124.0 346.325</b>	CLEVELAND TOWER <b>124.5 273.45</b>	GND CON <b>121.7 273.45</b>	CLNC DEL <b>125.05 273.45</b>	CPDLC
---	---	--	--------------------------------	----------------------------------	-------



CATEGORY	A	B	C	D
S-ILS 6R	977/18		200 (200-½)	
S-LOC 6R	1260/24	483 (500-½)	1260/50	483 (500-1)
SIDESTEP 6L	1260/55	487 (500-1)	1260-1½ 487 (500-1½)	1260-2 487 (500-2)
CIRCLING	1420-1	621 (700-1)	1420-1¾ 621 (700-1¾)	1420-2 621 (700-2)

ELEV 799	D	TDZE 6R 777	TDZE 6L 773
----------	---	-------------	-------------

