

LOC/DME I-LIZ	APP CRS	Rwy Idg	6L	6R
111.55	058°	TDZE	9000	8029
Chan 52 (Y)		Apt Elev	773	777
			799	799

ILS or LOC RWY 6L
CLEVELAND-HOPKINS INTL (CLE)

From GROHL, HICKR, and KWENE: RNAV 1-DME/DME/IRU or GPS required for procedure entry. Aircraft not DME/DME/IRU or GPS equipped - RADAR required for procedure entry. RNAV 1.

DME required.

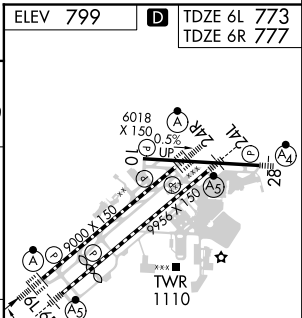
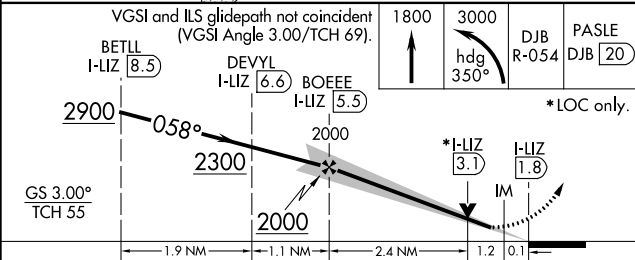
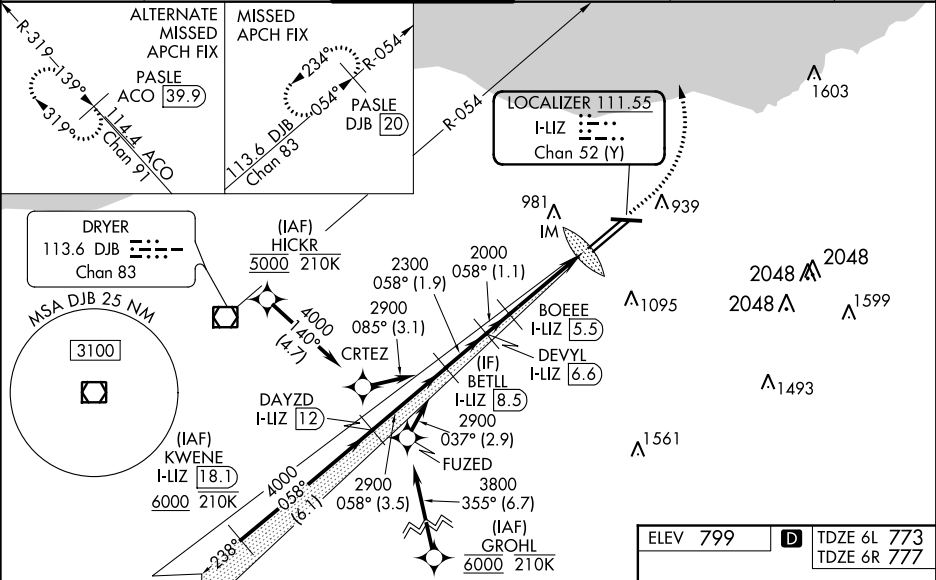
⚠ Circling Rwy 10 NA at night. Simultaneous approach authorized. Simultaneous operations require use of vertical guidance; maintain last assigned altitude until established on glideslope. Inop table does not apply to Sidestep 6R. For inop ALS, increase S-LOC 6L Cats C/D visibility to 1½ SM.

Rwy 6L
ALSF-2

Rwy 6R
MALSR

MISSED APPROACH: Climb to 1800 then climbing left turn to 3000 on heading 350° and DJB VOR/DME R-054 to PASLE/DJB 20 DME and hold.

D-ATIS ARR 127.85 DEP 132.375	CLEVELAND APP CON 124.0 346.325	CLEVELAND TOWER 124.5 273.45	GND CON 121.7 273.45	CLNC DEL 125.05 273.45	CPDLC
-------------------------------------	------------------------------------	---------------------------------	-------------------------	---------------------------	-------



CATEGORY	A	B	C	D
S-ILS 6L	973/18 200 (200-½)			
S-LOC 6L	1260/24	487 (500-½)	1260/50	487 (500-1)
SIDESTEP 6R	1260/55	483 (500-1)	1260-1½ 483 (500-1½)	1260-2 483 (500-2)
Ⓢ CIRCLING	1420-1	621 (700-1)	1420-1¾ 621 (700-1¾)	1420-2 621 (700-2)

ELEV 799

TDZE 6L 773
TDZE 6R 777

058° 3.7 NM from FAF

REIL Rwy 10
TDZ/CL Rwy 6L, 6R, 24L, and 24R
HIRL Rwy 6L-24R, 6R-24L and 10-28