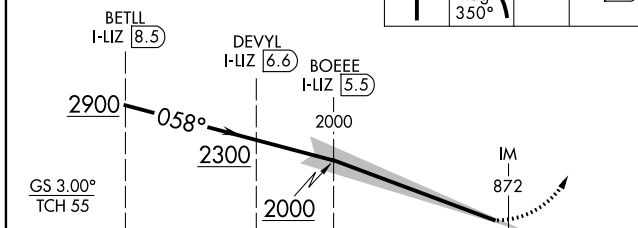


ILS RWY 6L (CAT II & III)
CLEVELAND-HOPKINS INTL (CLE)

MISSED APPROACH: Climb to 1800 then climbing left turn to 3000 on heading 350° and DJB VOR/DME R-054 to PASLE/DJB 20 DME and hold.

1800 ↑	3000 ← hdg 350°	DJB R-054
-----------	--------------------------	--------------



	1.9 NM	1.1 NM	3.7 NM	1036'
CATEGORY	A	B	C	D
S-ILS 6L	CAT II RA 111/12 100 DA 873			
S-ILS 6L	CAT III RVR 06			

CATEGORY II & III ILS - SPECIAL AIRCREW
& AIRCRAFT CERTIFICATION REQUIRED

REIL Rwy 10
TDZ/CL Rwy 6L, 6R, 24L, and 24R
HIRL Rwy 6L-24R, 6R-24L and 10-28