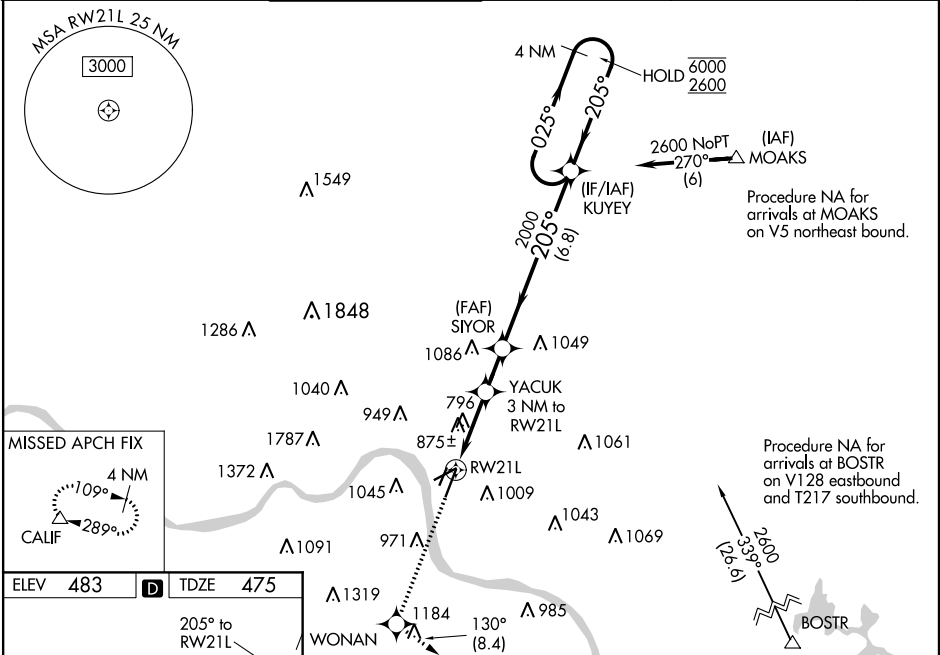


WAAS CH 42511 W21A	APP CRS 205°	Rwy Idg TDZE 475 Apt Elev 483
--	------------------------	---

RNAV (GPS) RWY 21L
CINCINNATI MUNI AIRPORT LUNKEN FIELD (LUK)

RNP APCH. ▼ Circling NA for Cat D north of Rwy 7 and northwest of Rwy 21R. Circling Rwy 3L, 7, 21R NA at night. Rwy 21L helicopter visibility reduction below 3/4 SM NA. Inop table does not apply to LNAV/VNAV. For uncompensated Baro-VNAV systems, LNAV/VNAV NA below -15°C or above 54°C. For inop ALS, increase LPV all Cats visibility to RVR 4500, LNAV Cats A/B visibility to RVR 5500 and LNAV Cats C/D visibility to 2 SM. ▲ MISSED APCH FIX				MALSRL A5	MISSED APPROACH: Climb to 2500 direct WONAN and on track 130° to CALIF and hold, continue climb-in-hold to 2600.	
ATIS 120.25	CINCINNATI APP CON 121.0 254.25	LUNKEN TOWER ★ 118.7 (CTAF) 0 257.8	GND CON 121.9	CLNC DEL 121.9	CLNC DEL 124.9 (when twr closed)	UNICOM 122.95



ELEV 483	D	TDZE 475
205° to RW21L		
TWR 553		
RW21L 5127 X 100		
RW21R 3801 X 100		
RW21L 6101 X 150		
REIL Rwy 3R		
HIRL Rwy 3R-21L		
MIRL Rwy 3L-21R and 7-25		
*LNAV only.		
RW21L 2.1 NM to RW21L		
YACUK 3 NM to RW21L		
SIYOR 2000		
KUYEY 2000		
*1460		
2.1 NM 0.9 NM 1.7 NM 6.8 NM		
CATEGORY	A	B C D
LPV DA	756/40	281 (300-3/4)
LNAV/VNAV DA	1217-2 1/4	742 (800-2 1/4)
LNAV MDA	1200/40 725 (800-3/4)	1200-1 1/2 725 (800-1 1/2)
CIRCLING	1300-1 1/4 817 (900-1 1/4)	1360-1 1/4 877 (900-1 1/4) 1360-2 1/2 877 (900-2 1/2) 1360-2 3/4 877 (900-2 3/4)

EC-2, 03 DEC 2020 to 31 DEC 2020

EC-2, 03 DEC 2020 to 31 DEC 2020